

For Research Use Only

WNT2B Monoclonal Matched Antibody Pair, PBS Only



Catalog Number:MP51661-1

Capture Antibody Information

Catalog Number:
61070-1-PBS

Host:
Mouse

Isotype:
IgG1

Purification Method:
Protein G Magarose purification

Clone ID:
1F11C9

Reactivity:
human

GenBank:
BC141825

Immunogen Catalog Number:
Ag28705

Conjugate:
Unconjugated

Full name:
wingless-type MMTV integration site family, member 2B

Gene ID:
7482

Detection Antibody Information

Catalog Number:
61070-2-PBS

Host:
Mouse

Isotype:
IgG1

Purification Method:
Protein G purification

Clone ID:
1F8F10

Reactivity:
human

GenBank:
BC141825

Immunogen Catalog Number:
Ag28705

Conjugate:
Unconjugated

Full name:
wingless-type MMTV integration site family, member 2B

Gene ID:
7482

Applications

Tested Applications:
Cytometric bead array

Range:
3.125-400 ng/mL (Cytometric Bead Array)

Recommended Dilutions:
It is recommended that this reagent should be titrated in each testing system to obtain optimal results.

Product Information

MP51661-1 targets WNT2B in immunoassays as a matched antibody pair. Validated in Cytometric bead array.

Capture antibody: WNT2B Monoclonal antibody, PBS Only (Capture) 61070-1-PBS (1F11C9). 100 µg. Concentration 1 mg/mL.

Detection antibody: WNT2B Monoclonal antibody, PBS Only (Detector) 61070-2-PBS (1F8F10). 100 µg. Concentration 1 mg/mL.

Unconjugated mouse monoclonal antibody pair in PBS only storage buffer at a concentration of 1 mg/mL, ready for conjugation.

Matched antibody pairs are designed for use in a variety of assays and platforms that require matched antibody pairs.

Antibody use should be optimized for each application and assay.

Storage

Storage:

Store at -80°C.

The product is shipped with ice packs. Upon receipt, store it immediately at -80°C

Storage buffer:

PBS only

For technical support and original validation data for this product please contact:

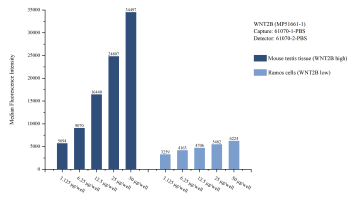
T: 4006900926

E: Proteintech-CN@ptglab.com

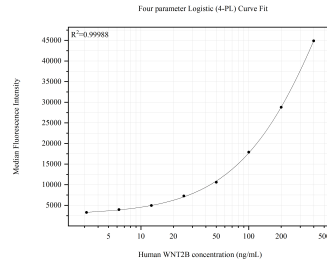
W: ptgcn.com

This product is exclusively available under Proteintech Group brand and is not available to purchase from any other manufacturer.

Selected Validation Data



Cytometric bead array sample test of MP51661-1, WNT2B Monoclonal Matched Antibody Pair, PBS Only. Capture antibody: 61070-1-PBS. Detection antibody: 61070-2-PBS.



Cytometric bead array standard curve of MP51661-1, WNT2B Monoclonal Matched Antibody Pair, PBS Only. Capture antibody: 61070-1-PBS. Detection antibody: 61070-2-PBS. Standard: Ag28705. Range: 3.125-400 ng/mL