

For Research Use Only

# MAPK6 Monoclonal Matched Antibody Pair, PBS Only



Catalog Number:MP51628-1

## Capture Antibody Information

Catalog Number:  
61058-1-PBS

Host:  
Mouse

Isotype:  
IgG2a

Purification Method:  
Protein A purification

Clone ID:  
2C8C4

Reactivity:  
human

GenBank:  
BC035492

Immunogen Catalog Number:  
Ag28703

Conjugate:  
Unconjugated

Full name:  
mitogen-activated protein kinase 6

Gene ID:  
5597

## Detection Antibody Information

Catalog Number:  
61058-2-PBS

Host:  
Mouse

Isotype:  
IgG1

Purification Method:  
Protein G Magarose purification

Clone ID:  
2F10E2

Reactivity:  
human

GenBank:  
BC035492

Immunogen Catalog Number:  
Ag28703

Conjugate:  
Unconjugated

Full name:  
mitogen-activated protein kinase 6

Gene ID:  
5597

## Applications

Tested Applications:  
Cytometric bead array

Range:  
1.563-200 ng/mL (Cytometric Bead Array)

Recommended Dilutions:  
It is recommended that this reagent should be titrated in each testing system to obtain optimal results.

## Product Information

MP51628-1 targets MAPK6 in immunoassays as a matched antibody pair. Validated in Cytometric bead array.

Capture antibody: MAPK6 Monoclonal antibody, PBS Only (Capture) 61058-1-PBS (2C8C4). 100  $\mu$ g. Concentration 1 mg/mL.

Detection antibody: MAPK6 Monoclonal antibody, PBS Only (Detector) 61058-2-PBS (2F10E2). 100  $\mu$ g. Concentration 1 mg/mL.

Unconjugated mouse monoclonal antibody pair in PBS only storage buffer at a concentration of 1 mg/mL, ready for conjugation.

Matched antibody pairs are designed for use in a variety of assays and platforms that require matched antibody pairs.

Antibody use should be optimized for each application and assay.

## Storage

Storage:

Store at -80°C.

**The product is shipped with ice packs. Upon receipt, store it immediately at -80°C**

Storage buffer:

PBS only

For technical support and original validation data for this product please contact:

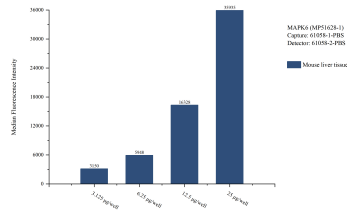
T: 4006900926

E: [Proteintech-CN@ptglab.com](mailto:Proteintech-CN@ptglab.com)

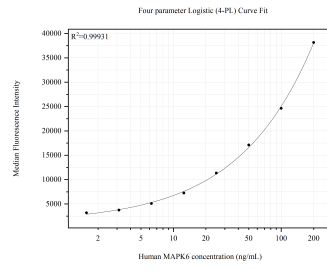
W: [ptgcn.com](http://ptgcn.com)

**This product is exclusively available under Proteintech Group brand and is not available to purchase from any other manufacturer.**

## Selected Validation Data



Cytometric bead array sample test of MP51628-1, MAPK6 Monoclonal Matched Antibody Pair, PBS Only. Capture antibody: 61058-1-PBS. Detection antibody: 61058-2-PBS.



Cytometric bead array standard curve of MP51628-1, MAPK6 Monoclonal Matched Antibody Pair, PBS Only. Capture antibody: 61058-1-PBS. Detection antibody: 61058-2-PBS. Standard: Ag28703. Range: 1.563-200 ng/mL.