

For Research Use Only

# THBS1 Monoclonal Matched Antibody Pair, PBS Only



Catalog Number:MP51616-1

## Capture Antibody Information

|  |   |                                       |
|--|---|---------------------------------------|
| <b>Catalog Number:</b><br>67241-2-PBS                          | <b>Clone ID:</b><br>1E11C4                  | <b>Conjugate:</b><br>Unconjugated     |
| <b>Host:</b><br>Mouse  | <b>Reactivity:</b><br>human                 | <b>Full name:</b><br>thrombospondin 1 |
| <b>Isotype:</b><br>IgG1  | <b>GenBank:</b><br>NM_003246                | <b>Gene ID:</b><br>7057               |
| <b>Purification Method:</b><br>Protein G Magarose purification | <b>Immunogen Catalog Number:</b><br>Ag29129 |                                       |

## Detection Antibody Information

|  |   |                                       |
|--|---|---------------------------------------|
| <b>Catalog Number:</b><br>67241-3-PBS                          | <b>Clone ID:</b><br>3A5A3                   | <b>Conjugate:</b><br>Unconjugated     |
| <b>Host:</b><br>Mouse  | <b>Reactivity:</b><br>human                 | <b>Full name:</b><br>thrombospondin 1 |
| <b>Isotype:</b><br>IgG1  | <b>GenBank:</b><br>NM_003246                | <b>Gene ID:</b><br>7057               |
| <b>Purification Method:</b><br>Protein G Magarose purification | <b>Immunogen Catalog Number:</b><br>Ag29129 |                                       |

## Applications

|  |  |   |
|--|--|---|
| <b>Tested Applications:</b><br>Cytometric bead array | <b>Range:</b><br>3.125-400 ng/mL (Cytometric Bead Array) | <b>Recommended Dilutions:</b><br>It is recommended that this reagent should be titrated in each testing system to obtain optimal results. |
|--|--|---|

## Product Information

MP51616-1 targets THBS1 in immunoassays as a matched antibody pair. Validated in Cytometric bead array.

Capture antibody: Thrombospondin 1 Monoclonal antibody, PBS Only (Capture) 67241-2-PBS (1E11C4). 100 µg. Concentration 1 mg/mL.

Detection antibody: Thrombospondin 1 Monoclonal antibody, PBS Only (Detector) 67241-3-PBS (3A5A3). 100 µg. Concentration 1 mg/mL.

Unconjugated mouse monoclonal antibody pair in PBS only storage buffer at a concentration of 1 mg/mL, ready for conjugation.

Matched antibody pairs are designed for use in a variety of assays and platforms that require matched antibody pairs.

Antibody use should be optimized for each application and assay.

## Storage

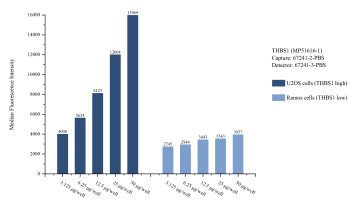
**Storage:**  
Store at -80°C.  
**The product is shipped with ice packs. Upon receipt, store it immediately at -80°C**

**Storage buffer:**  
PBS only

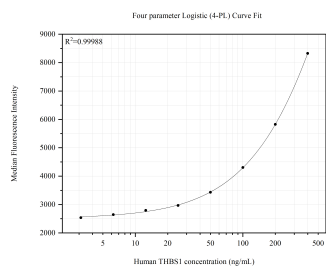
For technical support and original validation data for this product please contact:  
T: 4006900926 E: Proteintech-CN@ptglab.com W: ptgcn.com

**This product is exclusively available under Proteintech Group brand and is not available to purchase from any other manufacturer.**

## Selected Validation Data



Cytometric bead array sample test of MP51616-1, THBS1 Monoclonal Matched Antibody Pair, PBS Only. Capture antibody: 67241-2-PBS. Detection antibody: 67241-3-PBS.



Cytometric bead array standard curve of MP51616-1, THBS1 Monoclonal Matched Antibody Pair, PBS Only. Capture antibody: 67241-2-PBS. Detection antibody: 67241-3-PBS. Standard: Ag29129. Range: 3.125-400 ng/mL.