

For Research Use Only

# ACC Monoclonal Matched Antibody Pair, PBS Only



Catalog Number:MP51613-1

## Capture Antibody Information

**Catalog Number:**  
67373-2-PBS  
**Host:**  
Mouse  
**Isotype:**  
IgG1  
**Purification Method:**  
Protein G purification

**Clone ID:**  
2G11E5  
**Reactivity:**  
human  
**GenBank:**  
BC137287  
**Immunogen Catalog Number:**  
Ag17503

**Conjugate:**  
Unconjugated  
**Full name:**  
acetyl-Coenzyme A carboxylase alpha  
**Gene ID:**  
31

## Detection Antibody Information

**Catalog Number:**  
67373-3-PBS  
**Host:**  
Mouse  
**Isotype:**  
IgG1  
**Purification Method:**  
Protein G Magarose purification

**Clone ID:**  
2A2B8  
**Reactivity:**  
human  
**GenBank:**  
BC137287  
**Immunogen Catalog Number:**  
Ag17503

**Conjugate:**  
Unconjugated  
**Full name:**  
acetyl-Coenzyme A carboxylase alpha  
**Gene ID:**  
31

## Applications

**Tested Applications:**  
Cytometric bead array

**Range:**  
0.391-50 ng/mL (Cytometric Bead Array)

**Recommended Dilutions:**  
It is recommended that this reagent should be titrated in each testing system to obtain optimal results.

## Product Information

MP51613-1 targets ACC in immunoassays as a matched antibody pair. Validated in Cytometric bead array.  
Capture antibody: ACC Monoclonal antibody, PBS Only (Capture) 67373-2-PBS (2G11E5). 100  $\mu$ g. Concentration 1 mg/mL.  
Detection antibody: ACC Monoclonal antibody, PBS Only (Detector) 67373-3-PBS (2A2B8). 100  $\mu$ g. Concentration 1 mg/mL.  
Unconjugated mouse monoclonal antibody pair in PBS only storage buffer at a concentration of 1 mg/mL, ready for conjugation.  
Matched antibody pairs are designed for use in a variety of assays and platforms that require matched antibody pairs.  
Antibody use should be optimized for each application and assay.

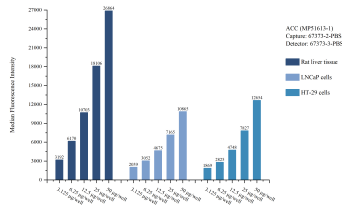
## Storage

**Storage:**  
Store at -80°C.  
**The product is shipped with ice packs. Upon receipt, store it immediately at -80°C**  
**Storage buffer:**  
PBS only

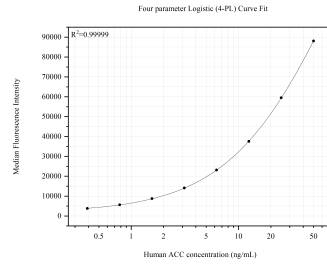
For technical support and original validation data for this product please contact:  
T: 4006900926 E: Proteintech-CN@ptglab.com W: ptgcn.com

**This product is exclusively available under Proteintech Group brand and is not available to purchase from any other manufacturer.**

## Selected Validation Data



Cytometric bead array sample test of MP51613-1, ACC Monoclonal Matched Antibody Pair, PBS Only. Capture antibody: 67373-2-PBS. Detection antibody: 67373-3-PBS.



Cytometric bead array standard curve of MP51613-1, ACC Monoclonal Matched Antibody Pair, PBS Only. Capture antibody: 67373-2-PBS. Detection antibody: 67373-3-PBS. Standard: Ag16452. Range: 0.391-50 ng/mL.