

ADRBK1 Monoclonal Matched Antibody Pair, PBS Only

Catalog Number: **MP51612-1**

Capture Antibody Information

Catalog Number: 67067-2-PBS	Clone ID: 2F2A8	Conjugate: Unconjugated
Host: Mouse	Reactivity: human	Full name: adrenergic, beta, receptor kinase 1
Isotype: IgG1	GenBank: BC037963	Gene ID: 156
Purification Method: Protein G purification	Immunogen Catalog Number: Ag5071	

Detection Antibody Information

Catalog Number: 67067-1-PBS	Clone ID: 2F7A5	Conjugate: Unconjugated
Host: Mouse	Reactivity: human	Full name: adrenergic, beta, receptor kinase 1
Isotype: IgG2a	GenBank: BC037963	Gene ID: 156
Purification Method: Protein A purification	Immunogen Catalog Number: Ag5071	

Applications

Tested Applications: Cytometric bead array	Range: 3.125-400 ng/mL (Cytometric Bead Array)	Recommended Dilutions: It is recommended that this reagent should be titrated in each testing system to obtain optimal results.
--	--	---

Product Information

MP51612-1 targets ADRBK1 in immunoassays as a matched antibody pair. Validated in Cytometric bead array.

Capture antibody: ADRBK1 Monoclonal antibody, PBS Only (Capture) 67067-2-PBS (2F2A8). 100 µg. Concentration 1 mg/mL.

Detection antibody: ADRBK1 Monoclonal antibody, PBS Only (Detector) 67067-1-PBS (2F7A5). 100 µg. Concentration 1 mg/mL.

Unconjugated mouse monoclonal antibody pair in PBS only storage buffer at a concentration of 1 mg/mL, ready for conjugation.

Matched antibody pairs are designed for use in a variety of assays and platforms that require matched antibody pairs.

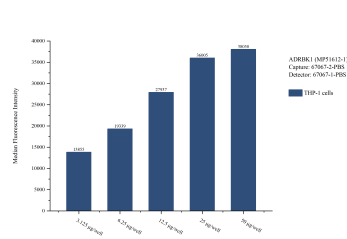
Antibody use should be optimized for each application and assay.

Storage

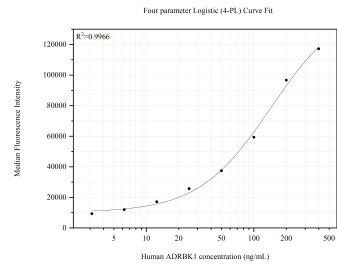
Storage:
Store at -80°C.
The product is shipped with ice packs. Upon receipt, store it immediately at -80°C

Storage buffer:
PBS only

Selected Validation Data



Cytometric bead array sample test of MP51612-1, ADRBK1 Monoclonal Matched Antibody Pair, PBS Only. Capture antibody: 67067-2-PBS. Detection antibody: 67067-1-PBS.



Cytometric bead array standard curve of MP51612-1, ADRBK1 Monoclonal Matched Antibody Pair, PBS Only. Capture antibody: 67067-2-PBS. Detection antibody: 67067-1-PBS. Standard:Ag5071. Range: 3.125-400 ng/mL