

SMURF2 Monoclonal Matched Antibody Pair, PBS Only

Catalog Number:MP51609-1

Capture Antibody Information

Catalog Number: 61048-1-PBS	Clone ID: 1B12B2	Conjugate: Unconjugated
Host: Mouse	Reactivity: human	Full name: SMAD specific E3 ubiquitin protein ligase 2
Isotype: IgG1	GenBank: BC093876	Gene ID: 64750
Purification Method: Protein G Magarose purification	Immunogen Catalog Number: Ag25734	

Detection Antibody Information

Catalog Number: 61048-2-PBS	Clone ID: 1F6D1	Conjugate: Unconjugated
Host: Mouse	Reactivity: human	Full name: SMAD specific E3 ubiquitin protein ligase 2
Isotype: IgG1	GenBank: BC093876	Gene ID: 64750
Purification Method: Protein G purification	Immunogen Catalog Number: Ag25734	

Applications

Tested Applications: Cytometric bead array	Range: 0.781-100 ng/mL (Cytometric Bead Array)	Recommended Dilutions: It is recommended that this reagent should be titrated in each testing system to obtain optimal results.
--	--	---

Product Information

MP51609-1 targets SMURF2 in immunoassays as a matched antibody pair. Validated in Cytometric bead array.

Capture antibody: SMURF2 Monoclonal antibody, PBS Only (Capture) 61048-1-PBS (1B12B2). 100 µg. Concentration 1 mg/mL.

Detection antibody: SMURF2 Monoclonal antibody, PBS Only (Detector) 61048-2-PBS (1F6D1). 100 µg. Concentration 1 mg/mL.

Unconjugated mouse monoclonal antibody pair in PBS only storage buffer at a concentration of 1 mg/mL, ready for conjugation.

Matched antibody pairs are designed for use in a variety of assays and platforms that require matched antibody pairs.

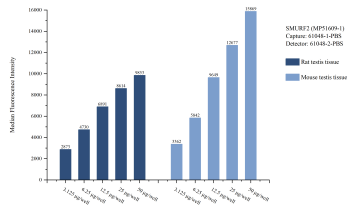
Antibody use should be optimized for each application and assay.

Storage

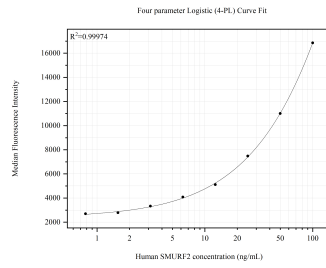
Storage:
Store at -80°C.
The product is shipped with ice packs. Upon receipt, store it immediately at -80°C

Storage buffer:
PBS only

Selected Validation Data



Cytometric bead array sample test of MP51609-1, SMURF2 Monoclonal Matched Antibody Pair, PBS Only. Capture antibody: 61048-1-PBS. Detection antibody: 61048-2-PBS.



Cytometric bead array standard curve of MP51609-1, SMURF2 Monoclonal Matched Antibody Pair, PBS Only. Capture antibody: 61048-1-PBS. Detection antibody: 61048-2-PBS. Standard: Ag25734. Range: 0.781-100 ng/mL.