

# MCM5 Monoclonal Matched Antibody Pair, PBS Only

Catalog Number: **MP51608-1**

## Capture Antibody Information

**Catalog Number:**  
67049-1-PBS  
**Host:**  
Mouse  
**Isotype:**  
IgG1  
**Purification Method:**  
Protein G purification

**Clone ID:**  
3B7F8  
**Reactivity:**  
human, mouse, rat  
**GenBank:**  
BC000142  
**Immunogen Catalog Number:**  
Ag28704

**Conjugate:**  
Unconjugated  
**Full name:**  
minichromosome maintenance complex component 5  
**Gene ID:**  
4174

## Detection Antibody Information

**Catalog Number:**  
67049-2-PBS  
**Host:**  
Mouse  
**Isotype:**  
IgG2b  
**Purification Method:**  
Protein A purification

**Clone ID:**  
1A9A1  
**Reactivity:**  
human  
**GenBank:**  
BC000142  
**Immunogen Catalog Number:**  
Ag28704

**Conjugate:**  
Unconjugated  
**Full name:**  
minichromosome maintenance complex component 5  
**Gene ID:**  
4174

## Applications

**Tested Applications:**  
Cytometric bead array

**Range:**  
0.781-100 ng/mL (Cytometric Bead Array)

**Recommended Dilutions:**  
It is recommended that this reagent should be titrated in each testing system to obtain optimal results.

## Product Information

MP51608-1 targets MCM5 in immunoassays as a matched antibody pair. Validated in Cytometric bead array.

Capture antibody: MCM5 Monoclonal antibody, PBS Only (Capture) 67049-1-PBS (3B7F8). 100 µg. Concentration 1 mg/mL.

Detection antibody: MCM5 Monoclonal antibody, PBS Only (Detector) 67049-2-PBS (1A9A1). 100 µg. Concentration 1 mg/mL.

Unconjugated mouse monoclonal antibody pair in PBS only storage buffer at a concentration of 1 mg/mL, ready for conjugation.

Matched antibody pairs are designed for use in a variety of assays and platforms that require matched antibody pairs.

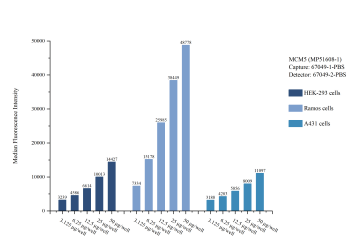
Antibody use should be optimized for each application and assay.

## Storage

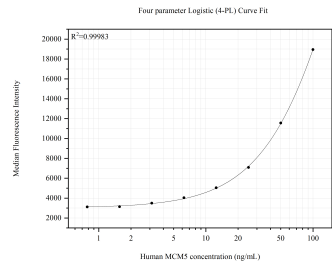
**Storage:**  
Store at -80°C.  
**Storage buffer:**  
PBS only

The product is shipped with ice packs. Upon receipt, store it immediately at -80°C

Selected Validation Data



Cytometric bead array sample test of MP51608-1, MCM5 Monoclonal Matched Antibody Pair, PBS Only. Capture antibody: 67049-1-PBS. Detection antibody: 67049-2-PBS.



Cytometric bead array standard curve of MP51608-1, MCM5 Monoclonal Matched Antibody Pair, PBS Only. Capture antibody: 67049-1-PBS. Detection antibody: 67049-2-PBS. Standard:Ag28704. Range: 0.781-100 ng/mL.