

For Research Use Only

PELP1 Monoclonal Matched Antibody Pair, PBS Only



Catalog Number:MP51603-1

Capture Antibody Information

Catalog Number:
67050-2-PBS

Host:
Mouse

Isotype:
IgG1

Purification Method:
Protein G Magarose purification

Clone ID:
1D11G8

Reactivity:
human

GenBank:
BC069058

Immunogen Catalog Number:
Ag25729

Conjugate:
Unconjugated

Full name:
proline, glutamate and leucine rich protein 1

Gene ID:
27043

Detection Antibody Information

Catalog Number:
67050-3-PBS

Host:
Mouse

Isotype:
IgG2a

Purification Method:
Protein A Magarose purification

Clone ID:
1G8E9

Reactivity:
human

GenBank:
BC069058

Immunogen Catalog Number:
Ag25729

Conjugate:
Unconjugated

Full name:
proline, glutamate and leucine rich protein 1

Gene ID:
27043

Applications

Tested Applications:
Cytometric bead array

Range:
1.563-200 ng/mL (Cytometric Bead Array)

Recommended Dilutions:
It is recommended that this reagent should be titrated in each testing system to obtain optimal results.

Product Information

MP51603-1 targets PELP1 in immunoassays as a matched antibody pair. Validated in Cytometric bead array.

Capture antibody: PELP1 Monoclonal antibody, PBS Only (Capture) 67050-2-PBS (1D11G8). 100 μ g. Concentration 1 mg/mL.

Detection antibody: PELP1 Monoclonal antibody, PBS Only (Detector) 67050-3-PBS (1G8E9). 100 μ g. Concentration 1 mg/mL.

Unconjugated mouse monoclonal antibody pair in PBS only storage buffer at a concentration of 1 mg/mL, ready for conjugation.

Matched antibody pairs are designed for use in a variety of assays and platforms that require matched antibody pairs.

Antibody use should be optimized for each application and assay.

Storage

Storage:

Store at -80°C.

The product is shipped with ice packs. Upon receipt, store it immediately at -80°C

Storage buffer:

PBS only

For technical support and original validation data for this product please contact:

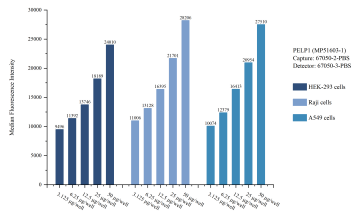
T: 4006900926

E: Proteintech-CN@ptglab.com

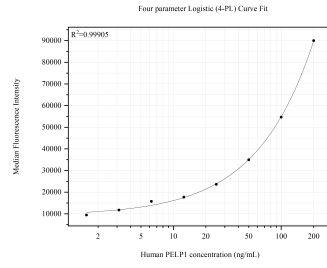
W: ptgcn.com

This product is exclusively available under Proteintech Group brand and is not available to purchase from any other manufacturer.

Selected Validation Data



Cytometric bead array sample test of MP51603-1, PELP1 Monoclonal Matched Antibody Pair, PBS Only. Capture antibody: 67050-2-PBS. Detection antibody: 67050-3-PBS.



Cytometric bead array standard curve of MP51603-1, PELP1 Monoclonal Matched Antibody Pair, PBS Only. Capture antibody: 67050-2-PBS. Detection antibody: 67050-3-PBS. Standard: Ag25729. Range: 1.563-200 ng/mL