

FLII Monoclonal Matched Antibody Pair, PBS Only

Catalog Number:MP51602-1

Capture Antibody Information

Catalog Number:

67039-2-PBS

Host:

Mouse

Isotype:

IgG2a

Purification Method:

Protein A Magarose purification

Clone ID:

3G1H9

Reactivity:

human

GenBank:

BC025300

Immunogen Catalog Number:

Ag26865

Conjugate:

Unconjugated

Full name:

flightless I homolog (Drosophila)

Gene ID:

2314

Detection Antibody Information

Catalog Number:

67039-3-PBS

Host:

Mouse

Isotype:

IgG2a

Purification Method:

Protein A Magarose purification

Clone ID:

1B4B4

Reactivity:

human

GenBank:

BC025300

Immunogen Catalog Number:

Ag26865

Conjugate:

Unconjugated

Full name:

flightless I homolog (Drosophila)

Gene ID:

2314

Applications

Tested Applications:

Cytometric bead array

Range:

3.125-400 ng/mL (Cytometric Bead Array)

Recommended Dilutions:

It is recommended that this reagent should be titrated in each testing system to obtain optimal results.

Product Information

MP51602-1 targets FLII in immunoassays as a matched antibody pair. Validated in Cytometric bead array.

Capture antibody: FLII Monoclonal antibody, PBS Only (Capture) 67039-2-PBS (3G1H9). 100 µg. Concentration 1 mg/mL.

Detection antibody: FLII Monoclonal antibody, PBS Only (Detector) 67039-3-PBS (1B4B4). 100 µg. Concentration 1 mg/mL.

Unconjugated mouse monoclonal antibody pair in PBS only storage buffer at a concentration of 1 mg/mL, ready for conjugation.

Matched antibody pairs are designed for use in a variety of assays and platforms that require matched antibody pairs.

Antibody use should be optimized for each application and assay.

Storage

Storage:

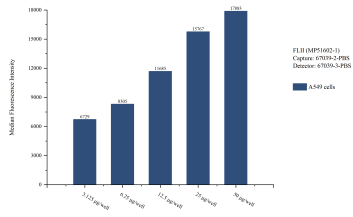
Store at -80°C.

The product is shipped with ice packs. Upon receipt, store it immediately at -80°C

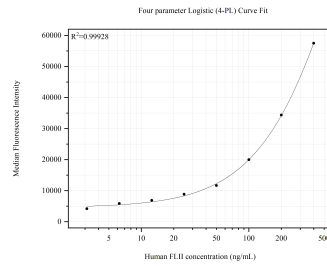
Storage buffer:

PBS only

Selected Validation Data



Cytometric bead array sample test of MP51602-1, FLII Monoclonal Matched Antibody Pair, PBS Only. Capture antibody: 67039-2-PBS. Detection antibody: 67039-3-PBS.



Cytometric bead array standard curve of MP51602-1, FLII Monoclonal Matched Antibody Pair, PBS Only. Capture antibody: 67039-2-PBS. Detection antibody: 67039-3-PBS. Standard: Ag26865. Range: 3.125-400 ng/mL.