

LDLRAP1 Monoclonal Matched Antibody Pair, PBS Only

Catalog Number: **MP51596-1**

Capture Antibody Information

Catalog Number: 66932-3-PBS	Clone ID: 2B2A4	Conjugate: Unconjugated
Host: Mouse	Reactivity: human	Full name: low density lipoprotein receptor adaptor protein 1
Isotype: IgG1	GenBank: BC029770	Gene ID: 26119
Purification Method: Protein G Magarose purification	Immunogen Catalog Number: Ag28608	

Detection Antibody Information

Catalog Number: 66932-2-PBS	Clone ID: 1D1B11	Conjugate: Unconjugated
Host: Mouse	Reactivity: human, rat	Full name: low density lipoprotein receptor adaptor protein 1
Isotype: IgG2b	GenBank: BC029770	Gene ID: 26119
Purification Method: Protein A purification	Immunogen Catalog Number: Ag28608	

Applications

Tested Applications: Cytometric bead array	Range: 1.563-200 ng/mL (Cytometric Bead Array)	Recommended Dilutions: It is recommended that this reagent should be titrated in each testing system to obtain optimal results.
--	--	---

Product Information

MP51596-1 targets LDLRAP1 in immunoassays as a matched antibody pair. Validated in Cytometric bead array.

Capture antibody: LDLRAP1 Monoclonal antibody, PBS Only (Capture) 66932-3-PBS (2B2A4). 100 µg. Concentration 1 mg/mL.

Detection antibody: ARH Monoclonal antibody, PBS Only (Detector) 66932-2-PBS (1D1B11). 100 µg. Concentration 1 mg/mL.

Unconjugated mouse monoclonal antibody pair in PBS only storage buffer at a concentration of 1 mg/mL, ready for conjugation.

Matched antibody pairs are designed for use in a variety of assays and platforms that require matched antibody pairs.

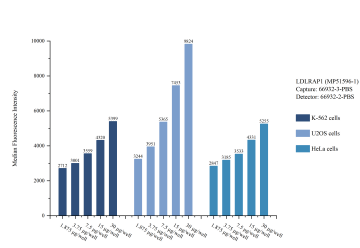
Antibody use should be optimized for each application and assay.

Storage

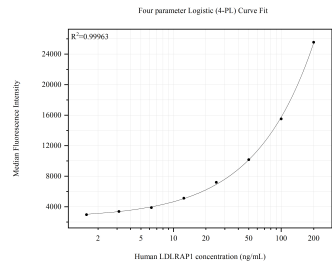
Storage:
Store at -80°C.
The product is shipped with ice packs. Upon receipt, store it immediately at -80°C

Storage buffer:
PBS only

Selected Validation Data



Cytometric bead array sample test of MP51596-1, LDLRAP1 Monoclonal Matched Antibody Pair, PBS Only. Capture antibody: 66932-3-PBS. Detection antibody: 66932-2-PBS.



Cytometric bead array standard curve of MP51596-1, LDLRAP1 Monoclonal Matched Antibody Pair, PBS Only. Capture antibody: 66932-3-PBS. Detection antibody: 66932-2-PBS. Standard:Ag28608. Range: 1.563-200 ng/mL