

For Research Use Only

# ECD Monoclonal Matched Antibody Pair, PBS Only



Catalog Number:MP51594-1

## Capture Antibody Information

Catalog Number:  
67179-2-PBS

Host:  
Mouse

Isotype:  
IgG1

Purification Method:  
Protein G purification

Clone ID:  
2D1C2

Reactivity:  
human

GenBank:  
BC000721

Immunogen Catalog Number:  
Ag28674

Conjugate:  
Unconjugated

Full name:  
ecdysoneless homolog (Drosophila)

Gene ID:  
11319

## Detection Antibody Information

Catalog Number:  
67179-3-PBS

Host:  
Mouse

Isotype:  
IgG1

Purification Method:  
Protein G purification

Clone ID:  
2D7B6

Reactivity:  
human

GenBank:  
BC000721

Immunogen Catalog Number:  
Ag28674

Conjugate:  
Unconjugated

Full name:  
ecdysoneless homolog (Drosophila)

Gene ID:  
11319

## Applications

Tested Applications:  
Cytometric bead array

Range:  
1.563-200 ng/mL (Cytometric Bead Array)

Recommended Dilutions:  
It is recommended that this reagent should be titrated in each testing system to obtain optimal results.

## Product Information

MP51594-1 targets ECD in immunoassays as a matched antibody pair. Validated in Cytometric bead array.

Capture antibody: ECD Monoclonal antibody, PBS Only (Capture) 67179-2-PBS (2D1C2). 100 µg. Concentration 1 mg/mL.

Detection antibody: ECD Monoclonal antibody, PBS Only (Detector) 67179-3-PBS (2D7B6). 100 µg. Concentration 1 mg/mL.

Unconjugated mouse monoclonal antibody pair in PBS only storage buffer at a concentration of 1 mg/mL, ready for conjugation.

Matched antibody pairs are designed for use in a variety of assays and platforms that require matched antibody pairs.

Antibody use should be optimized for each application and assay.

## Storage

Storage:

Store at -80°C.

**The product is shipped with ice packs. Upon receipt, store it immediately at -80°C**

Storage buffer:

PBS only

For technical support and original validation data for this product please contact:

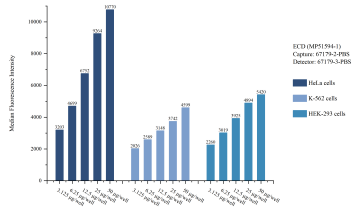
T: 4006900926

E: [Proteintech-CN@ptglab.com](mailto:Proteintech-CN@ptglab.com)

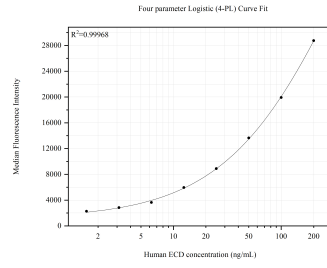
W: [ptgcn.com](http://ptgcn.com)

**This product is exclusively available under Proteintech Group brand and is not available to purchase from any other manufacturer.**

## Selected Validation Data



Cytometric bead array sample test of MP51594-1, ECD Monoclonal Matched Antibody Pair, PBS Only. Capture antibody: 67179-2-PBS. Detection antibody: 67179-3-PBS.



Cytometric bead array standard curve of MP51594-1, ECD Monoclonal Matched Antibody Pair, PBS Only. Capture antibody: 67179-2-PBS. Detection antibody: 67179-3-PBS. Standard: Ag28674. Range: 1.563-200 ng/mL.