

# TAB1 Monoclonal Matched Antibody Pair, PBS Only

Catalog Number: **MP51590-1**

## Capture Antibody Information

**Catalog Number:**  
67020-1-PBS

**Host:**  
Mouse

**Isotype:**  
IgG1

**Purification Method:**  
Protein G purification

**Clone ID:**  
1E10D12

**Reactivity:**  
human, mouse, rat

**GenBank:**  
BC050554

**Immunogen Catalog Number:**  
Ag6590

**Conjugate:**  
Unconjugated

**Full name:**  
mitogen-activated protein kinase kinase kinase 7 interacting protein 1

**Gene ID:**  
10454

## Detection Antibody Information

**Catalog Number:**  
67020-2-PBS

**Host:**  
Mouse

**Isotype:**  
IgG1

**Purification Method:**  
Protein G purification

**Clone ID:**  
2G8B2

**Reactivity:**  
human

**GenBank:**  
BC050554

**Immunogen Catalog Number:**  
Ag6590

**Conjugate:**  
Unconjugated

**Full name:**  
mitogen-activated protein kinase kinase kinase 7 interacting protein 1

**Gene ID:**  
10454

## Applications

**Tested Applications:**  
Cytometric bead array

**Range:**  
3.125-400 ng/mL (Cytometric Bead Array)

**Recommended Dilutions:**  
It is recommended that this reagent should be titrated in each testing system to obtain optimal results.

## Product Information

MP51590-1 targets TAB1 in immunoassays as a matched antibody pair. Validated in Cytometric bead array.

Capture antibody: TAB1 Monoclonal antibody, PBS Only (Capture) 67020-1-PBS (1E10D12). 100 µg. Concentration 1 mg/mL.

Detection antibody: TAB1 Monoclonal antibody, PBS Only (Detector) 67020-2-PBS (2G8B2). 100 µg. Concentration 1 mg/mL.

Unconjugated mouse monoclonal antibody pair in PBS only storage buffer at a concentration of 1 mg/mL, ready for conjugation.

Matched antibody pairs are designed for use in a variety of assays and platforms that require matched antibody pairs.

Antibody use should be optimized for each application and assay.

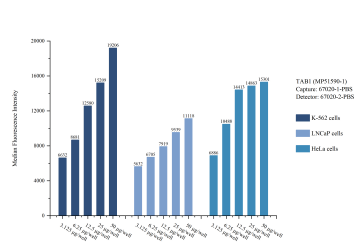
## Storage

**Storage:**  
Store at -80°C.

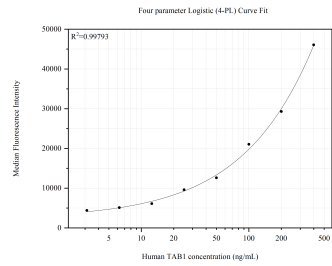
**The product is shipped with ice packs. Upon receipt, store it immediately at -80°C**

**Storage buffer:**  
PBS only

Selected Validation Data



Cytometric bead array sample test of MP51590-1, TAB1 Monoclonal Matched Antibody Pair, PBS Only. Capture antibody: 67020-1-PBS. Detection antibody: 67020-2-PBS.



Cytometric bead array standard curve of MP51590-1, TAB1 Monoclonal Matched Antibody Pair, PBS Only. Capture antibody: 67020-1-PBS. Detection antibody: 67020-2-PBS. Standard:Ag6590. Range: 3.125-400 ng/mL.