

# KCNA2 Monoclonal Matched Antibody Pair, PBS Only

Catalog Number:MP51562-1

## Capture Antibody Information

**Catalog Number:**  
61044-1-PBS  
**Host:**  
Mouse  
**Isotype:**  
IgG1  
**Purification Method:**  
Protein G purification

**Clone ID:**  
3F11C11  
**Reactivity:**  
human  
**GenBank:**  
BC043564  
**Immunogen Catalog Number:**  
Ag5639

**Conjugate:**  
Unconjugated  
**Full name:**  
potassium voltage-gated channel, shaker-related subfamily, member 2  
**Gene ID:**  
3737

## Detection Antibody Information

**Catalog Number:**  
61044-2-PBS  
**Host:**  
Mouse  
**Isotype:**  
IgG1  
**Purification Method:**  
Protein G purification

**Clone ID:**  
1D2B6  
**Reactivity:**  
human  
**GenBank:**  
BC043564  
**Immunogen Catalog Number:**  
Ag5639

**Conjugate:**  
Unconjugated  
**Full name:**  
potassium voltage-gated channel, shaker-related subfamily, member 2  
**Gene ID:**  
3737

## Applications

**Tested Applications:**  
Cytometric bead array

**Range:**  
0.313-10 ng/mL (Cytometric Bead Array)

**Recommended Dilutions:**  
It is recommended that this reagent should be titrated in each testing system to obtain optimal results.

## Product Information

MP51562-1 targets KCNA2 in immunoassays as a matched antibody pair. Validated in Cytometric bead array.

Capture antibody: KCNA2 Monoclonal antibody, PBS Only (Capture) 61044-1-PBS (3F11C11). 100 µg. Concentration 1 mg/mL.

Detection antibody: KCNA2 Monoclonal antibody, PBS Only (Detector) 61044-2-PBS (1D2B6). 100 µg. Concentration 1 mg/mL.

Unconjugated mouse monoclonal antibody pair in PBS only storage buffer at a concentration of 1 mg/mL, ready for conjugation.

Matched antibody pairs are designed for use in a variety of assays and platforms that require matched antibody pairs.

Antibody use should be optimized for each application and assay.

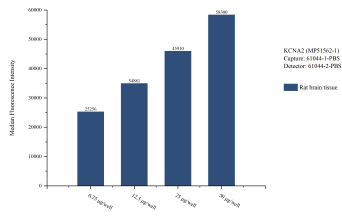
## Storage

**Storage:**  
Store at -80°C.

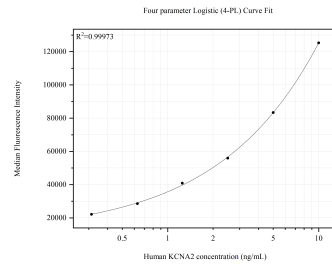
The product is shipped with ice packs. Upon receipt, store it immediately at -80°C

**Storage buffer:**  
PBS only

## Selected Validation Data



Cytometric bead array sample test of MP51562-1, KCNA2 Monoclonal Matched Antibody Pair, PBS Only. Capture antibody: 61044-1-PBS. Detection antibody: 61044-2-PBS.



Cytometric bead array standard curve of MP51562-1, KCNA2 Monoclonal Matched Antibody Pair, PBS Only. Capture antibody: 61044-1-PBS. Detection antibody: 61044-2-PBS. Standard: Ag5639. Range: 0.313-10 ng/mL.