

For Research Use Only

SERPINB4 Monoclonal Matched Antibody Pair, PBS Only



Catalog Number:MP51557-1

Capture Antibody Information

Catalog Number:
61039-1-PBS
Host:
Mouse
Isotype:
IgG1
Purification Method:
Protein G Magarose purification

Clone ID:
4C11C9
Reactivity:
human
GenBank:
BC017401
Immunogen Catalog Number:
Ag1964

Conjugate:
Unconjugated
Full name:
serpin peptidase inhibitor, clade B (ovalbumin), member 4
Gene ID:
6318

Detection Antibody Information

Catalog Number:
61039-2-PBS
Host:
Mouse
Isotype:
IgG1
Purification Method:
Protein G Magarose purification

Clone ID:
5A2C11
Reactivity:
human
GenBank:
BC017401
Immunogen Catalog Number:
Ag1964

Conjugate:
Unconjugated
Full name:
serpin peptidase inhibitor, clade B (ovalbumin), member 4
Gene ID:
6318

Applications

Tested Applications:
Cytometric bead array

Range:
0.781-100 ng/mL (Cytometric Bead Array)

Recommended Dilutions:
It is recommended that this reagent should be titrated in each testing system to obtain optimal results.

Product Information

MP51557-1 targets SERPINB4 in immunoassays as a matched antibody pair. Validated in Cytometric bead array.

Capture antibody: SERPINB4 Monoclonal antibody, PBS Only (Capture) 61039-1-PBS (4C11C9). 100 μ g. Concentration 1 mg/mL.

Detection antibody: SERPINB4 Monoclonal antibody, PBS Only (Detector) 61039-2-PBS (5A2C11). 100 μ g. Concentration 1 mg/mL.

Unconjugated mouse monoclonal antibody pair in PBS only storage buffer at a concentration of 1 mg/mL, ready for conjugation.

Matched antibody pairs are designed for use in a variety of assays and platforms that require matched antibody pairs.

Antibody use should be optimized for each application and assay.

Storage

Storage:
Store at -80°C.
The product is shipped with ice packs. Upon receipt, store it immediately at -80°C
Storage buffer:
PBS only

For technical support and original validation data for this product please contact:

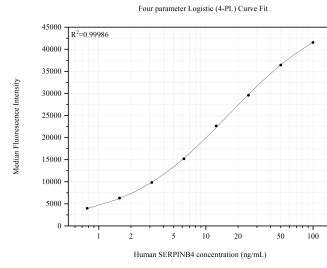
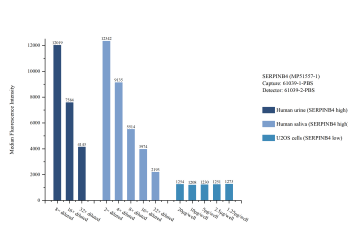
T: 4006900926

E: Proteintech-CN@ptglab.com

W: ptgcn.com

This product is exclusively available under Proteintech Group brand and is not available to purchase from any other manufacturer.

Selected Validation Data



Cytometric bead array sample test of MP51557-1, SERPINB4 Monoclonal Matched Antibody Pair, PBS Only. Capture antibody: 61039-1-PBS. Detection antibody: 61039-2-PBS.

Cytometric bead array standard curve of MP51557-1, SERPINB4 Monoclonal Matched Antibody Pair, PBS Only. Capture antibody: 61039-1-PBS. Detection antibody: 61039-2-PBS. Standard: Ag1964. Range: 0.781-100 ng/mL.