

# EFCAB4B Monoclonal Matched Antibody Pair, PBS Only

Catalog Number: **MP51547-1**

## Capture Antibody Information

**Catalog Number:**  
66787-1-PBS  
**Host:**  
Mouse  
**Isotype:**  
IgG1  
**Purification Method:**  
Protein G purification

**Clone ID:**  
4C1F5  
**Reactivity:**  
human  
**GenBank:**  
BC004524  
**Immunogen Catalog Number:**  
Ag7525

**Conjugate:**  
Unconjugated  
**Full name:**  
EF-hand calcium binding domain 4B  
**Gene ID:**  
84766

## Detection Antibody Information

**Catalog Number:**  
66787-2-PBS  
**Host:**  
Mouse  
**Isotype:**  
IgG1  
**Purification Method:**  
Protein G purification

**Clone ID:**  
1E6B9  
**Reactivity:**  
human  
**GenBank:**  
BC004524  
**Immunogen Catalog Number:**  
Ag7525

**Conjugate:**  
Unconjugated  
**Full name:**  
EF-hand calcium binding domain 4B  
**Gene ID:**  
84766

## Applications

**Tested Applications:**  
Cytometric bead array

**Range:**  
0.391-50 ng/mL (Cytometric Bead Array)

**Recommended Dilutions:**  
It is recommended that this reagent should be titrated in each testing system to obtain optimal results.

## Product Information

MP51547-1 targets EFCAB4B in immunoassays as a matched antibody pair. Validated in Cytometric bead array.

Capture antibody: CRACR2A Monoclonal antibody, PBS Only (Capture) 66787-1-PBS (4C1F5). 100 µg. Concentration 1 mg/mL.

Detection antibody: EFCAB4B Monoclonal antibody, PBS Only (Detector) 66787-2-PBS (1E6B9). 100 µg. Concentration 1 mg/mL.

Unconjugated mouse monoclonal antibody pair in PBS only storage buffer at a concentration of 1 mg/mL, ready for conjugation.

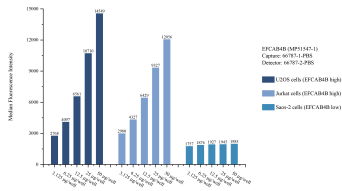
Matched antibody pairs are designed for use in a variety of assays and platforms that require matched antibody pairs.

Antibody use should be optimized for each application and assay.

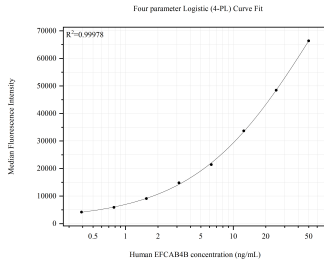
## Storage

**Storage:**  
Store at -80°C.  
**The product is shipped with ice packs. Upon receipt, store it immediately at -80°C**  
**Storage buffer:**  
PBS only

## Selected Validation Data



Cytometric bead array sample test of MP51547-1, EFCAB4B Monoclonal Matched Antibody Pair, PBS Only. Capture antibody: 66787-1-PBS. Detection antibody: 66787-2-PBS.



Cytometric bead array standard curve of MP51547-1, EFCA4B4 MonoClonal Matched Antibody Pair, PBS Only. Capture antibody: 66787-1-PBS. Detection antibody: 66787-2-PBS. Standard:Ag7525. Range: 0.391-50 ng/mL.