

KDM1 Monoclonal Matched Antibody Pair, PBS Only

Catalog Number: **MP51540-1**

Capture Antibody Information

Catalog Number:
67037-1-PBS

Host:
Mouse

Isotype:
IgG1

Purification Method:
Protein G purification

Clone ID:
2F10A12

Reactivity:
human, mouse, rat

GenBank:
BC040194

Immunogen Catalog Number:
Ag14778

Conjugate:
Unconjugated

Full name:
lysine (K)-specific demethylase 1

Gene ID:
23028

Detection Antibody Information

Catalog Number:
67037-2-PBS

Host:
Mouse

Isotype:
IgG1

Purification Method:
Protein G purification

Clone ID:
3C3C4

Reactivity:
human

GenBank:
BC040194

Immunogen Catalog Number:
Ag14778

Conjugate:
Unconjugated

Full name:
lysine (K)-specific demethylase 1

Gene ID:
23028

Applications

Tested Applications:
Cytometric bead array

Range:
3.125-400 ng/mL (Cytometric Bead Array)

Recommended Dilutions:
It is recommended that this reagent should be titrated in each testing system to obtain optimal results.

Product Information

MP51540-1 targets KDM1 in immunoassays as a matched antibody pair. Validated in Cytometric bead array.

Capture antibody: KDM1 Monoclonal antibody, PBS Only (Capture) 67037-1-PBS (2F10A12). 100 µg. Concentration 1 mg/mL.

Detection antibody: KDM1 Monoclonal antibody, PBS Only (Detector) 67037-2-PBS (3C3C4). 100 µg. Concentration 1 mg/mL.

Unconjugated mouse monoclonal antibody pair in PBS only storage buffer at a concentration of 1 mg/mL, ready for conjugation.

Matched antibody pairs are designed for use in a variety of assays and platforms that require matched antibody pairs.

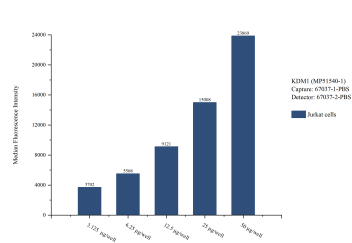
Antibody use should be optimized for each application and assay.

Storage

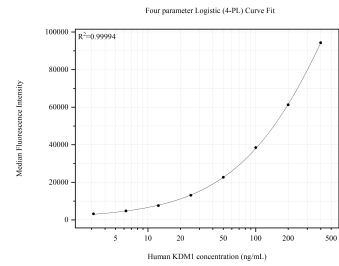
Storage:
Store at -80°C.
The product is shipped with ice packs. Upon receipt, store it immediately at -80°C

Storage buffer:
PBS only

Selected Validation Data



Cytometric bead array sample test of MP51540-1, KDM1 Monoclonal Matched Antibody Pair, PBS Only. Capture antibody: 67037-1-PBS. Detection antibody: 67037-2-PBS.



Cytometric bead array standard curve of MP51540-1, KDM1 Monoclonal Matched Antibody Pair, PBS Only. Capture antibody: 67037-1-PBS. Detection antibody: 67037-2-PBS. Standard: Ag14778. Range: 3.125-400 ng/mL.