

For Research Use Only

GCLM Monoclonal Matched Antibody Pair, PBS Only



Catalog Number:MP51539-1

Capture Antibody Information

Catalog Number:
66808-2-PBS
Host:
Mouse
Isotype:
IgG1
Purification Method:
Protein G purification

Clone ID:
1D5C7
Reactivity:
human
GenBank:
BC041809
Immunogen Catalog Number:
Ag5497

Conjugate:
Unconjugated
Full name:
glutamate-cysteine ligase, modifier subunit
Gene ID:
2730

Detection Antibody Information

Catalog Number:
66808-3-PBS
Host:
Mouse
Isotype:
IgG1
Purification Method:
Protein G Magarose purification

Clone ID:
1D11B1
Reactivity:
human
GenBank:
BC041809
Immunogen Catalog Number:
Ag5497

Conjugate:
Unconjugated
Full name:
glutamate-cysteine ligase, modifier subunit
Gene ID:
2730

Applications

Tested Applications:
Cytometric bead array

Range:
3.125-400 ng/mL (Cytometric Bead Array)

Recommended Dilutions:
It is recommended that this reagent should be titrated in each testing system to obtain optimal results.

Product Information

MP51539-1 targets GCLM in immunoassays as a matched antibody pair. Validated in Cytometric bead array.
Capture antibody: GCLM Monoclonal antibody, PBS Only (Capture) 66808-2-PBS (1D5C7). 100 µg. Concentration 1 mg/mL.
Detection antibody: GCLM Monoclonal antibody, PBS Only (Detector) 66808-3-PBS (1D11B1). 100 µg. Concentration 1 mg/mL.
Unconjugated mouse monoclonal antibody pair in PBS only storage buffer at a concentration of 1 mg/mL, ready for conjugation.
Matched antibody pairs are designed for use in a variety of assays and platforms that require matched antibody pairs.
Antibody use should be optimized for each application and assay.

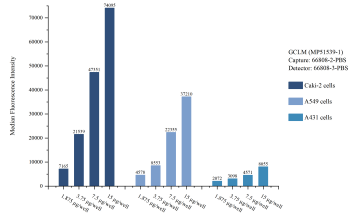
Storage

Storage:
Store at -80°C.
The product is shipped with ice packs. Upon receipt, store it immediately at -80°C
Storage buffer:
PBS only

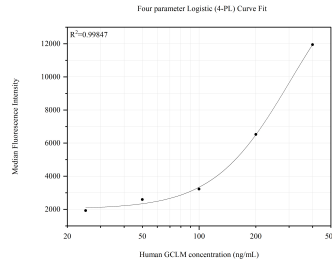
For technical support and original validation data for this product please contact:
T: 4006900926 E: Proteintech-CN@ptglab.com W: ptgcn.com

This product is exclusively available under Proteintech Group brand and is not available to purchase from any other manufacturer.

Selected Validation Data



Cytometric bead array sample test of MP51539-1, GCLM Monoclonal Matched Antibody Pair, PBS Only. Capture antibody: 66808-2-PBS. Detection antibody: 66808-3-PBS.



Cytometric bead array standard curve of MP51539-1, GCLM Monoclonal Matched Antibody Pair, PBS Only. Capture antibody: 66808-2-PBS. Detection antibody: 66808-3-PBS. Standard: Ag5497. Range: 3.125-400 ng/mL.