

TRIM32 Monoclonal Matched Antibody Pair, PBS Only

Catalog Number:MP51524-1

Capture Antibody Information

Catalog Number: 61027-1-PBS	Clone ID: 2D6A7	Conjugate: Unconjugated
Host: Mouse	Reactivity: human	Full name: tripartite motif-containing 32
Isotype: IgG1	GenBank: BC003154	Gene ID: 22954
Purification Method: Protein G Magarose purification	Immunogen Catalog Number: Ag24346	

Detection Antibody Information

Catalog Number: 61027-2-PBS	Clone ID: 1H6A6	Conjugate: Unconjugated
Host: Mouse	Reactivity: human	Full name: tripartite motif-containing 32
Isotype: IgG1	GenBank: BC003154	Gene ID: 22954
Purification Method: Protein G Magarose purification	Immunogen Catalog Number: Ag24346	

Applications

Tested Applications: Cytometric bead array	Range: 3.125-400 ng/mL (Cytometric Bead Array)	Recommended Dilutions: It is recommended that this reagent should be titrated in each testing system to obtain optimal results.
--	--	---

Product Information

MP51524-1 targets TRIM32 in immunoassays as a matched antibody pair. Validated in Cytometric bead array.

Capture antibody: TRIM32 Monoclonal antibody, PBS Only (Capture) 61027-1-PBS (2D6A7). 100 µg. Concentration 1 mg/mL.

Detection antibody: TRIM32 Monoclonal antibody, PBS Only (Detector) 61027-2-PBS (1H6A6). 100 µg. Concentration 1 mg/mL.

Unconjugated mouse monoclonal antibody pair in PBS only storage buffer at a concentration of 1 mg/mL, ready for conjugation.

Matched antibody pairs are designed for use in a variety of assays and platforms that require matched antibody pairs.

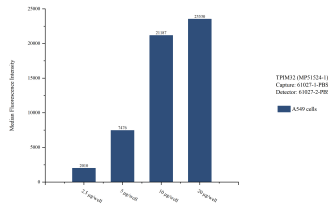
Antibody use should be optimized for each application and assay.

Storage

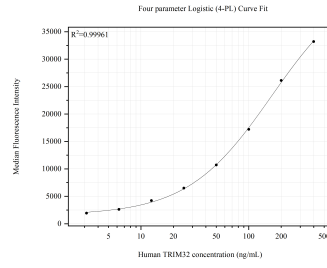
Storage:
Store at -80°C.
The product is shipped with ice packs. Upon receipt, store it immediately at -80°C

Storage buffer:
PBS only

Selected Validation Data



Cytometric bead array sample test of MP51524-1, TRIM32 Monoclonal Matched Antibody Pair, PBS Only. Capture antibody: 61027-1-PBS. Detection antibody: 61027-2-PBS.



Cytometric bead array standard curve of MP51524-1, TRIM32 Monoclonal Matched Antibody Pair, PBS Only. Capture antibody: 61027-1-PBS. Detection antibody: 61027-2-PBS. Standard: Ag24346. Range: 3.125-400 ng/mL