

MED30 Monoclonal Matched Antibody Pair, PBS Only

Catalog Number: **MP51523-2**

Capture Antibody Information

Catalog Number:
67038-2-PBS
Host:
Mouse
Isotype:
IgG1
Purification Method:
Protein G purification

Clone ID:
3E4A7
Reactivity:
human
GenBank:
BC008226
Immunogen Catalog Number:
Ag10235

Conjugate:
Unconjugated
Full name:
mediator complex subunit 30
Gene ID:
90390

Detection Antibody Information

Catalog Number:
67038-3-PBS
Host:
Mouse
Isotype:
IgG2a
Purification Method:
Protein A Magarose purification

Clone ID:
2C12C6
Reactivity:
human
GenBank:
BC008226
Immunogen Catalog Number:
Ag10235

Conjugate:
Unconjugated
Full name:
mediator complex subunit 30
Gene ID:
90390

Applications

Tested Applications:
Cytometric bead array, Sandwich ELISA

Range:
0.391-50 ng/mL (Cytometric Bead Array)
156-5000 pg/mL (Sandwich ELISA)

Recommended Dilutions:
It is recommended that this reagent should be titrated in each testing system to obtain optimal results.

Product Information

MP51523-2 targets MED30 in immunoassays as a matched antibody pair. Validated in Cytometric bead array, Sandwich ELISA.

Capture antibody: MED30 Monoclonal antibody, PBS Only (Capture) 67038-2-PBS (3E4A7). 100 µg. Concentration 1 mg/mL.

Detection antibody: MED30 Monoclonal antibody, PBS Only (Detector) 67038-3-PBS (2C12C6). 100 µg. Concentration 1 mg/mL.

Unconjugated mouse monoclonal antibody pair in PBS only storage buffer at a concentration of 1 mg/mL, ready for conjugation.

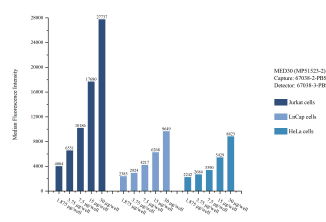
Matched antibody pairs are designed for use in a variety of assays and platforms that require matched antibody pairs.

Antibody use should be optimized for each application and assay.

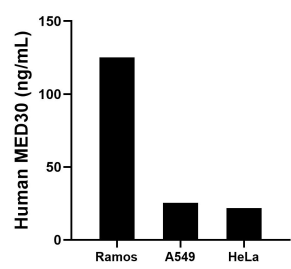
Storage

Storage:
Store at -80°C.
The product is shipped with ice packs. Upon receipt, store it immediately at -80°C
Storage buffer:
PBS only

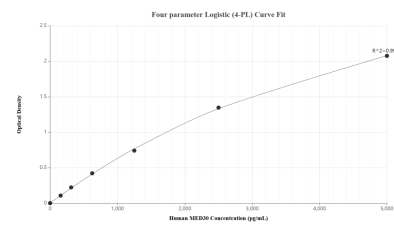
Selected Validation Data



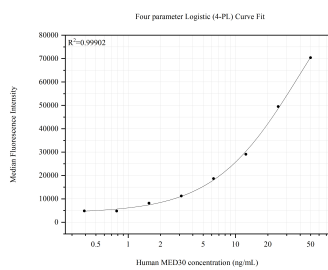
Cytometric bead array sample test of MP51523-2, MED30 Monoclonal Matched Antibody Pair, PBS Only. Capture antibody: 67038-2-PBS. Detection antibody: 67038-3-PBS.



The mean MED30 concentration was determined to be 125.2 ng/mL in Ramos cell extract based on a 2.3 mg/mL extract load, 25.5 ng/mL in A549 cell extract based on a 1.2 mg/mL extract load and 21.9 ng/mL in HeLa cell extract based on a 1.2 mg/mL extract load.



Sandwich ELISA standard curve of MP51523-2, Human MED30 Monoclonal Matched Antibody Pair - PBS only. 67038-2-PBS was coated to a plate as the capture antibody and incubated with serial dilutions of standard Ag10235. 67038-3-PBS was HRP conjugated as the detection antibody. Range: 156-5000 pg/mL



Cytometric bead array standard curve of MP51523-2, MED30 Monoclonal Matched Antibody Pair, PBS Only. Capture antibody: 67038-2-PBS. Detection antibody: 67038-3-PBS. Standard:Ag10235. Range: 0.391-50 ng/mL