

RBX1 Monoclonal Matched Antibody Pair, PBS Only

Catalog Number:MP51522-1

Capture Antibody Information

Catalog Number:
66716-2-PBS

Host:
Mouse

Isotype:
IgG1

Purification Method:
Protein G purification

Clone ID:
1A11A10

Reactivity:
human

GenBank:
BC001466

Immunogen Catalog Number:
Ag7005

Conjugate:
Unconjugated

Full name:
ring-box 1

Gene ID:
9978

Detection Antibody Information

Catalog Number:
66716-3-PBS

Host:
Mouse

Isotype:
IgG2a

Purification Method:
Protein A Magarose purification

Clone ID:
2D11B2

Reactivity:
human

GenBank:
BC001466

Immunogen Catalog Number:
Ag7005

Conjugate:
Unconjugated

Full name:
ring-box 1

Gene ID:
9978

Applications

Tested Applications:
Cytometric bead array

Range:
3.125-400 ng/mL (Cytometric Bead Array)

Recommended Dilutions:
It is recommended that this reagent should be titrated in each testing system to obtain optimal results.

Product Information

MP51522-1 targets RBX1 in immunoassays as a matched antibody pair. Validated in Cytometric bead array.

Capture antibody: RBX1 Monoclonal antibody, PBS Only (Capture) 66716-2-PBS (1A11A10). 100 μ g. Concentration 1 mg/mL.

Detection antibody: RBX1 Monoclonal antibody, PBS Only (Detector) 66716-3-PBS (2D11B2). 100 μ g. Concentration 1 mg/mL.

Unconjugated mouse monoclonal antibody pair in PBS only storage buffer at a concentration of 1 mg/mL, ready for conjugation.

Matched antibody pairs are designed for use in a variety of assays and platforms that require matched antibody pairs.

Antibody use should be optimized for each application and assay.

Storage

Storage:

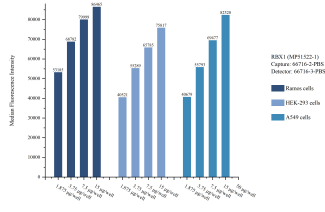
Store at -80°C.

The product is shipped with ice packs. Upon receipt, store it immediately at -80°C

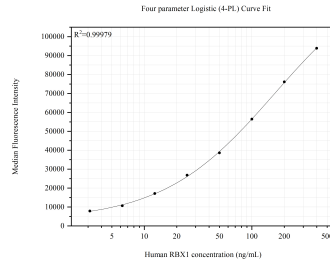
Storage buffer:

PBS only

Selected Validation Data



Cytometric bead array sample test of MP51522-1, RBX1 Monoclonal Matched Antibody Pair, PBS Only. Capture antibody: 66716-2-PBS. Detection antibody: 66716-3-PBS.



Cytometric bead array standard curve of MP51522-1, RBX1 Monoclonal Matched Antibody Pair, PBS Only. Capture antibody: 66716-2-PBS. Detection antibody: 66716-3-PBS. Standard: Ag7005. Range: 3.125-400 ng/mL.