

TRIM2 Monoclonal Matched Antibody Pair, PBS Only

Catalog Number: **MP51520-1**

Capture Antibody Information

Catalog Number:
67342-1-PBS

Host:
Mouse

Isotype:
IgG1

Purification Method:
Protein G purification

Clone ID:
1H9C2

Reactivity:
human, mouse, rat, pig

GenBank:
BC011052

Immunogen Catalog Number:
Ag14637

Conjugate:
Unconjugated

Full name:
tripartite motif-containing 2

Gene ID:
23321

Detection Antibody Information

Catalog Number:
67342-2-PBS

Host:
Mouse

Isotype:
IgG2a

Purification Method:
Protein A purification

Clone ID:
2C9C1

Reactivity:
human

GenBank:
BC011052

Immunogen Catalog Number:
Ag14637

Conjugate:
Unconjugated

Full name:
tripartite motif-containing 2

Gene ID:
23321

Applications

Tested Applications:
Cytometric bead array

Range:
12.5-400 ng/mL (Cytometric Bead Array)

Recommended Dilutions:
It is recommended that this reagent should be titrated in each testing system to obtain optimal results.

Product Information

MP51520-1 targets TRIM2 in immunoassays as a matched antibody pair. Validated in Cytometric bead array.

Capture antibody: TRIM2 Monoclonal antibody, PBS Only (Capture) 67342-1-PBS (1H9C2). 100 µg. Concentration 1 mg/mL.

Detection antibody: TRIM2 Monoclonal antibody, PBS Only (Detector) 67342-2-PBS (2C9C1). 100 µg. Concentration 1 mg/mL.

Unconjugated mouse monoclonal antibody pair in PBS only storage buffer at a concentration of 1 mg/mL, ready for conjugation.

Matched antibody pairs are designed for use in a variety of assays and platforms that require matched antibody pairs.

Antibody use should be optimized for each application and assay.

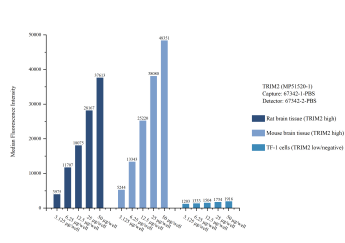
Storage

Storage:
Store at -80°C.

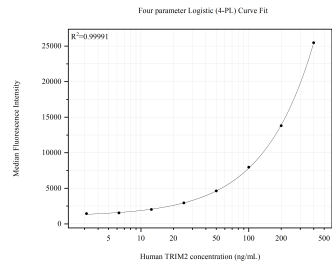
The product is shipped with ice packs. Upon receipt, store it immediately at -80°C

Storage buffer:
PBS only

Selected Validation Data



Cytometric bead array sample test of MP51520-1, TRIM2 Monoclonal Matched Antibody Pair, PBS Only. Capture antibody: 67342-1-PBS. Detection antibody: 67342-2-PBS.



Cytometric bead array standard curve of MP51520-1, TRIM2 Monoclonal Matched Antibody Pair, PBS Only. Capture antibody: 67342-1-PBS. Detection antibody: 67342-2-PBS. Standard:Ag14637. Range: 12.5-400 ng/mL.