

For Research Use Only

CRTAC1 Monoclonal Matched Antibody Pair, PBS Only



Catalog Number:MP51517-1

Capture Antibody Information

Catalog Number: 68276-2-PBS	Clone ID: 2D11E12	Conjugate: Unconjugated
Host: Mouse	Reactivity: human	Full name: cartilage acidic protein 1
Isotype: IgG3	GenBank: BC034245	Gene ID: 55118
Purification Method: Protein A purification	Immunogen Catalog Number: Ag32813	

Detection Antibody Information

Catalog Number: 68276-3-PBS	Clone ID: 2A10C7	Conjugate: Unconjugated
Host: Mouse	Reactivity: human	Full name: cartilage acidic protein 1
Isotype: IgG1	GenBank: BC034245	Gene ID: 55118
Purification Method: Protein G Magarose purification	Immunogen Catalog Number: Ag32813	

Applications

Tested Applications: Cytometric bead array	Range: 0.781-100 ng/mL (Cytometric Bead Array)	Recommended Dilutions: It is recommended that this reagent should be titrated in each testing system to obtain optimal results.
--	--	---

Product Information

MP51517-1 targets CRTAC1 in immunoassays as a matched antibody pair. Validated in Cytometric bead array.

Capture antibody: CRTAC1 Monoclonal antibody, PBS Only (Capture) 68276-2-PBS (2D11E12). 100 µg. Concentration 1 mg/mL.

Detection antibody: CRTAC1 Monoclonal antibody, PBS Only (Detector) 68276-3-PBS (2A10C7). 100 µg. Concentration 1 mg/mL.

Unconjugated mouse monoclonal antibody pair in PBS only storage buffer at a concentration of 1 mg/mL, ready for conjugation.

Matched antibody pairs are designed for use in a variety of assays and platforms that require matched antibody pairs.

Antibody use should be optimized for each application and assay.

Storage

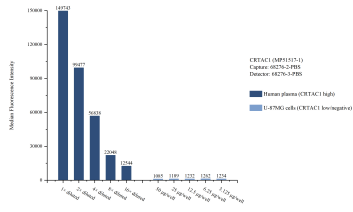
Storage:
Store at -80°C.
The product is shipped with ice packs. Upon receipt, store it immediately at -80°C

Storage buffer:
PBS only

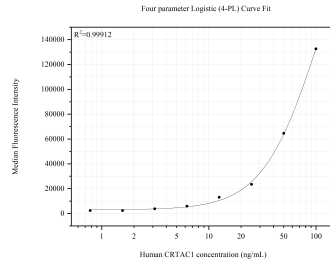
For technical support and original validation data for this product please contact:
T: 4006900926 E: Proteintech-CN@ptglab.com W: ptgcn.com

This product is exclusively available under Proteintech Group brand and is not available to purchase from any other manufacturer.

Selected Validation Data



Cytometric bead array sample test of MP51517-1, CRTAC1 Monoclonal Matched Antibody Pair, PBS Only. Capture antibody: 68276-2-PBS. Detection antibody: 68276-3-PBS.



Cytometric bead array standard curve of MP51517-1, CRTAC1 Monoclonal Matched Antibody Pair, PBS Only. Capture antibody: 68276-2-PBS. Detection antibody: 68276-3-PBS. Standard: Ag32813. Range: 0.781-100 ng/mL