

AKR1B1 Monoclonal Matched Antibody Pair, PBS Only

Catalog Number: **MP51514-1**

Capture Antibody Information

Catalog Number: 67498-1-PBS	Clone ID: 2F11G5	Conjugate: Unconjugated
Host: Mouse	Reactivity: human, mouse	Full name: aldo-keto reductase family 1, member B1 (aldose reductase)
Isotype: IgG1	GenBank: BC000260	Gene ID: 231
Purification Method: Protein G purification	Immunogen Catalog Number: Ag7571	

Detection Antibody Information

Catalog Number: 67498-2-PBS	Clone ID: 3C9F4	Conjugate: Unconjugated
Host: Mouse	Reactivity: human	Full name: aldo-keto reductase family 1, member B1 (aldose reductase)
Isotype: IgG2b	GenBank: BC000260	Gene ID: 231
Purification Method: Protein A purification	Immunogen Catalog Number: Ag7571	

Applications

Tested Applications: Cytometric bead array	Range: 0.781-100 ng/mL (Cytometric Bead Array)	Recommended Dilutions: It is recommended that this reagent should be titrated in each testing system to obtain optimal results.
--	--	---

Product Information

MP51514-1 targets AKR1B1 in immunoassays as a matched antibody pair. Validated in Cytometric bead array.

Capture antibody: AKR1B1 Monoclonal antibody, PBS Only (Capture) 67498-1-PBS (2F11G5). 100 µg. Concentration 1 mg/mL.

Detection antibody: AKR1B1 Monoclonal antibody, PBS Only (Detector) 67498-2-PBS (3C9F4). 100 µg. Concentration 1 mg/mL.

Unconjugated mouse monoclonal antibody pair in PBS only storage buffer at a concentration of 1 mg/mL, ready for conjugation.

Matched antibody pairs are designed for use in a variety of assays and platforms that require matched antibody pairs.

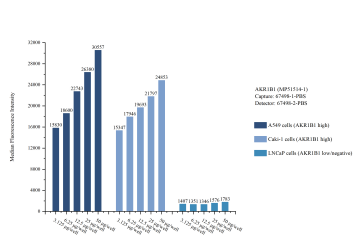
Antibody use should be optimized for each application and assay.

Storage

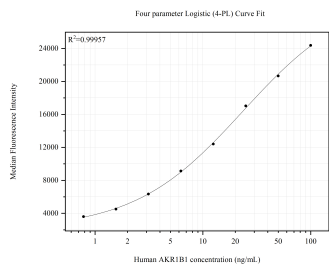
Storage:
Store at -80°C.
The product is shipped with ice packs. Upon receipt, store it immediately at -80°C

Storage buffer:
PBS only

Selected Validation Data



Cytometric bead array sample test of MP51514-1, AKR1B1 Monoclonal Matched Antibody Pair, PBS Only. Capture antibody: 67498-1-PBS. Detection antibody: 67498-2-PBS.



Cytometric bead array standard curve of MP51514-1, AKR1B1 Monoclonal Matched Antibody Pair, PBS Only. Capture antibody: 67498-1-PBS. Detection antibody: 67498-2-PBS. Standard:Ag7571. Range: 0.781-100 ng/mL