

# MAT2B Monoclonal Matched Antibody Pair, PBS Only

Catalog Number: **MP51506-1**

## Capture Antibody Information

**Catalog Number:**  
67643-1-PBS  
**Host:**  
Mouse  
**Isotype:**  
IgG1  
**Purification Method:**  
Protein A purification

**Clone ID:**  
2B7G8  
**Reactivity:**  
human, mouse, rat  
**GenBank:**  
BC005218  
**Immunogen Catalog Number:**  
Ag8649

**Conjugate:**  
Unconjugated  
**Full name:**  
methionine adenosyltransferase II, beta  
**Gene ID:**  
27430

## Detection Antibody Information

**Catalog Number:**  
67643-2-PBS  
**Host:**  
Mouse  
**Isotype:**  
IgG1  
**Purification Method:**  
Protein G Magarose purification

**Clone ID:**  
1F7D7  
**Reactivity:**  
human  
**GenBank:**  
BC005218  
**Immunogen Catalog Number:**  
Ag8649

**Conjugate:**  
Unconjugated  
**Full name:**  
methionine adenosyltransferase II, beta  
**Gene ID:**  
27430

## Applications

**Tested Applications:**  
Cytometric bead array

**Range:**  
12.5-200 ng/mL (Cytometric Bead Array)

**Recommended Dilutions:**  
It is recommended that this reagent should be titrated in each testing system to obtain optimal results.

## Product Information

MP51506-1 targets MAT2B in immunoassays as a matched antibody pair. Validated in Cytometric bead array.

Capture antibody: MAT2B Monoclonal antibody, PBS Only (Capture) 67643-1-PBS (2B7G8). 100  $\mu$ g. Concentration 1 mg/mL.

Detection antibody: MAT2B Monoclonal antibody, PBS Only (Detector) 67643-2-PBS (1F7D7). 100  $\mu$ g. Concentration 1 mg/mL.

Unconjugated mouse monoclonal antibody pair in PBS only storage buffer at a concentration of 1 mg/mL, ready for conjugation.

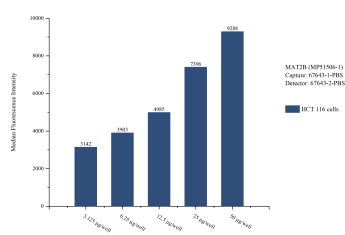
Matched antibody pairs are designed for use in a variety of assays and platforms that require matched antibody pairs.

Antibody use should be optimized for each application and assay.

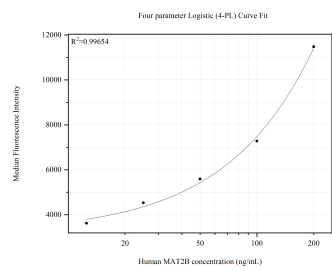
## Storage

**Storage:**  
Store at -80°C.  
**The product is shipped with ice packs. Upon receipt, store it immediately at -80°C**  
**Storage buffer:**  
PBS only

## Selected Validation Data



Cytometric bead array sample test of MP51506-1, MAT2B Monoclonal Matched Antibody Pair, PBS Only. Capture antibody: 67643-1-PBS. Detection antibody: 67643-2-PBS.



Cytometric bead array standard curve of MP51506-1, MAT2B Monoclonal Matched Antibody Pair, PBS Only. Capture antibody: 67643-1-PBS. Detection antibody: 67643-2-PBS. Standard: Ag8649. Range: 12.5-200 ng/mL.