

For Research Use Only

COL2A1 Monoclonal Matched Antibody Pair, PBS Only



Catalog Number:MP51491-1

Capture Antibody Information

Catalog Number: 61014-1-PBS	Clone ID: 1B8F9	Conjugate: Unconjugated
Host: Mouse	Reactivity: human	Full name: collagen, type II, alpha 1
Isotype: IgG1	GenBank: BC007252	Gene ID: 1280
Purification Method: Protein G Magarose purification	Immunogen Catalog Number: Ag29295	

Detection Antibody Information

Catalog Number: 61014-2-PBS	Clone ID: 2A3F3	Conjugate: Unconjugated
Host: Mouse	Reactivity: human	Full name: collagen, type II, alpha 1
Isotype: IgG3	GenBank: BC007252	Gene ID: 1280
Purification Method: Protein A Magarose purification	Immunogen Catalog Number: Ag29295	

Applications

Tested Applications: Cytometric bead array	Range: 1.563-200 ng/mL (Cytometric Bead Array)	Recommended Dilutions: It is recommended that this reagent should be titrated in each testing system to obtain optimal results.
--	--	---

Product Information

MP51491-1 targets COL2A1 in immunoassays as a matched antibody pair. Validated in Cytometric bead array.

Capture antibody: COL2A1 Monoclonal antibody, PBS Only (Capture) 61014-1-PBS (1B8F9). 100 µg. Concentration 1 mg/mL.

Detection antibody: COL2A1 Monoclonal antibody, PBS Only (Detector) 61014-2-PBS (2A3F3). 100 µg. Concentration 1 mg/mL.

Unconjugated mouse monoclonal antibody pair in PBS only storage buffer at a concentration of 1 mg/mL, ready for conjugation.

Matched antibody pairs are designed for use in a variety of assays and platforms that require matched antibody pairs.

Antibody use should be optimized for each application and assay.

Storage

Storage:
Store at -80°C.
The product is shipped with ice packs. Upon receipt, store it immediately at -80°C

Storage buffer:
PBS only

For technical support and original validation data for this product please contact:

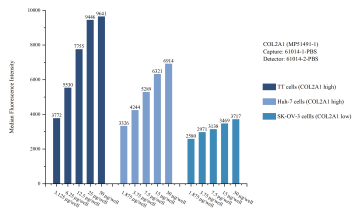
T: 4006900926

E: Proteintech-CN@ptglab.com

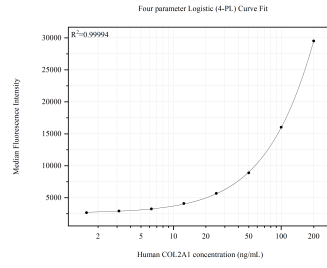
W: ptgcn.com

This product is exclusively available under Proteintech Group brand and is not available to purchase from any other manufacturer.

Selected Validation Data



Cytometric bead array sample test of MP51491-1, COL2A1 Monoclonal Matched Antibody Pair, PBS Only. Capture antibody: 61014-1-PBS. Detection antibody: 61014-2-PBS.



Cytometric bead array standard curve of MP51491-1, COL2A1 Monoclonal Matched Antibody Pair, PBS Only. Capture antibody: 61014-1-PBS. Detection antibody: 61014-2-PBS. Standard: Ag29295. Range: 1.563-200 ng/mL