

For Research Use Only

S100A3 Monoclonal Matched Antibody Pair, PBS Only



Catalog Number:MP51490-1

Capture Antibody Information

Catalog Number:
61013-1-PBS
Host:
Mouse
Isotype:
IgG2b
Purification Method:
Protein A purification

Clone ID:
1C5F3
Reactivity:
human
GenBank:
BC012893
Immunogen Catalog Number:
Ag23610

Conjugate:
Unconjugated
Full name:
S100 calcium binding protein A3
Gene ID:
6274

Detection Antibody Information

Catalog Number:
61013-2-PBS
Host:
Mouse
Isotype:
IgG1
Purification Method:
Protein G Magarose purification

Clone ID:
1C4C6
Reactivity:
human
GenBank:
BC012893
Immunogen Catalog Number:
Ag23610

Conjugate:
Unconjugated
Full name:
S100 calcium binding protein A3
Gene ID:
6274

Applications

Tested Applications:
Cytometric bead array

Range:
3.125-400 ng/mL (Cytometric Bead Array)

Recommended Dilutions:
It is recommended that this reagent should be titrated in each testing system to obtain optimal results.

Product Information

MP51490-1 targets S100A3 in immunoassays as a matched antibody pair. Validated in Cytometric bead array.
Capture antibody: S100A3 Monoclonal antibody, PBS Only (Capture) 61013-1-PBS (1C5F3). 100 µg. Concentration 1 mg/mL.
Detection antibody: S100A3 Monoclonal antibody, PBS Only (Detector) 61013-2-PBS (1C4C6). 100 µg. Concentration 1 mg/mL.
Unconjugated mouse monoclonal antibody pair in PBS only storage buffer at a concentration of 1 mg/mL, ready for conjugation.
Matched antibody pairs are designed for use in a variety of assays and platforms that require matched antibody pairs.
Antibody use should be optimized for each application and assay.

Storage

Storage:
Store at -80°C.
The product is shipped with ice packs. Upon receipt, store it immediately at -80°C
Storage buffer:
PBS only

For technical support and original validation data for this product please contact:

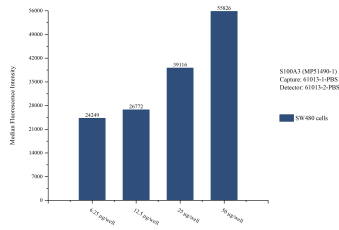
T: 4006900926

E: Proteintech-CN@ptglab.com

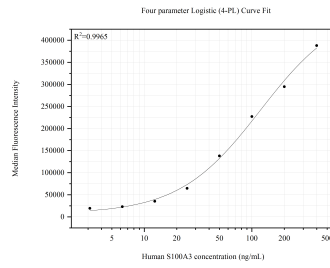
W: ptgcn.com

This product is exclusively available under Proteintech Group brand and is not available to purchase from any other manufacturer.

Selected Validation Data



Cytometric bead array sample test of MP51490-1, S100A3 Monoclonal Matched Antibody Pair, PBS Only. Capture antibody: 61013-1-PBS. Detection antibody: 61013-2-PBS.



Cytometric bead array standard curve of MP51490-1, S100A3 Monoclonal Matched Antibody Pair, PBS Only. Capture antibody: 61013-1-PBS. Detection antibody: 61013-2-PBS. Standard: Ag23610. Range: 3.125-400 ng/mL.