

SIGIRR Monoclonal Matched Antibody Pair, PBS Only

Catalog Number:MP51473-1

Capture Antibody Information

Catalog Number:
61011-1-PBS
Host:
Mouse
Isotype:
IgG2a
Purification Method:
Protein A Magarose purification

Clone ID:
1A2C2
Reactivity:
human
GenBank:
BC025953
Immunogen Catalog Number:
Ag32814

Conjugate:
Unconjugated
Full name:
single immunoglobulin and toll-interleukin 1 receptor (TIR) domain
Gene ID:
59307

Detection Antibody Information

Catalog Number:
61011-2-PBS
Host:
Mouse
Isotype:
IgG1
Purification Method:
Protein G Magarose purification

Clone ID:
2A8D2
Reactivity:
human
GenBank:
BC025953
Immunogen Catalog Number:
Ag32814

Conjugate:
Unconjugated
Full name:
single immunoglobulin and toll-interleukin 1 receptor (TIR) domain
Gene ID:
59307

Applications

Tested Applications:
Cytometric bead array

Range:
0.781-200 ng/mL (Cytometric Bead Array)

Recommended Dilutions:
It is recommended that this reagent should be titrated in each testing system to obtain optimal results.

Product Information

MP51473-1 targets SIGIRR in immunoassays as a matched antibody pair. Validated in Cytometric bead array.

Capture antibody: SIGIRR Monoclonal antibody, PBS Only (Capture) 61011-1-PBS (1A2C2). 100 µg. Concentration 1 mg/mL.

Detection antibody: SIGIRR Monoclonal antibody, PBS Only (Detector) 61011-2-PBS (2A8D2). 100 µg. Concentration 1 mg/mL.

Unconjugated mouse monoclonal antibody pair in PBS only storage buffer at a concentration of 1 mg/mL, ready for conjugation.

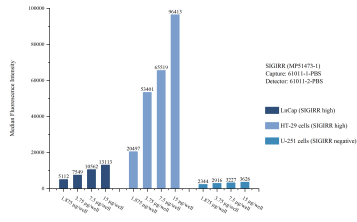
Matched antibody pairs are designed for use in a variety of assays and platforms that require matched antibody pairs.

Antibody use should be optimized for each application and assay.

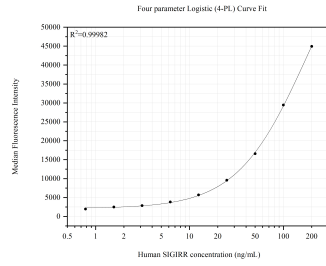
Storage

Storage:
Store at -80°C.
The product is shipped with ice packs. Upon receipt, store it immediately at -80°C
Storage buffer:
PBS only

Selected Validation Data



Cytometric bead array sample test of MP51473-1, SIGIRR Monoclonal Matched Antibody Pair, PBS Only. Capture antibody: 61011-1-PBS. Detection antibody: 61011-2-PBS.



Cytometric bead array standard curve of MP51473-1, SIGIRR Monoclonal Matched Antibody Pair, PBS Only. Capture antibody: 61011-1-PBS. Detection antibody: 61011-2-PBS. Standard: Ag32814. Range: 0.781-200 ng/mL.