

# ASF1A Monoclonal Matched Antibody Pair, PBS Only

Catalog Number: **MP51470-1**

## Capture Antibody Information

**Catalog Number:**  
66884-2-PBS  
**Host:**  
Mouse  
**Isotype:**  
IgG2b  
**Purification Method:**  
Protein A purification

**Clone ID:**  
4G1C8  
**Reactivity:**  
human  
**GenBank:**  
BC010878  
**Immunogen Catalog Number:**  
Ag1233

**Conjugate:**  
Unconjugated  
**Full name:**  
ASF1 anti-silencing function 1 homolog A (S. cerevisiae)  
**Gene ID:**  
25842

## Detection Antibody Information

**Catalog Number:**  
66884-1-PBS  
**Host:**  
Mouse  
**Isotype:**  
IgG3  
**Purification Method:**  
Protein A purification

**Clone ID:**  
2D4A6  
**Reactivity:**  
human, rat  
**GenBank:**  
BC010878  
**Immunogen Catalog Number:**  
Ag1233

**Conjugate:**  
Unconjugated  
**Full name:**  
ASF1 anti-silencing function 1 homolog A (S. cerevisiae)  
**Gene ID:**  
25842

## Applications

**Tested Applications:**  
Cytometric bead array

**Range:**  
0.781-100 ng/mL (Cytometric Bead Array)

**Recommended Dilutions:**  
It is recommended that this reagent should be titrated in each testing system to obtain optimal results.

## Product Information

MP51470-1 targets ASF1A in immunoassays as a matched antibody pair. Validated in Cytometric bead array.

Capture antibody: ASF1A Monoclonal antibody, PBS Only (Capture) 66884-2-PBS (4G1C8). 100 µg. Concentration 1 mg/mL.

Detection antibody: ASF1A Monoclonal antibody, PBS Only (Detector) 66884-1-PBS (2D4A6). 100 µg. Concentration 1 mg/mL.

Unconjugated mouse monoclonal antibody pair in PBS only storage buffer at a concentration of 1 mg/mL, ready for conjugation.

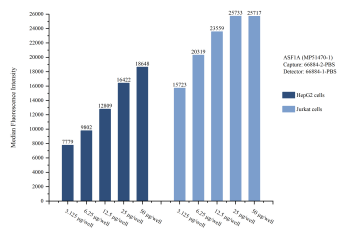
Matched antibody pairs are designed for use in a variety of assays and platforms that require matched antibody pairs.

Antibody use should be optimized for each application and assay.

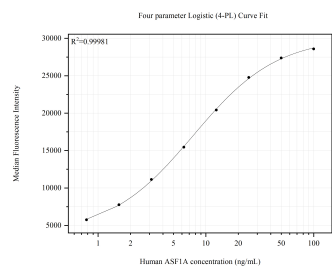
## Storage

**Storage:**  
Store at -80°C.  
**The product is shipped with ice packs. Upon receipt, store it immediately at -80°C**  
**Storage buffer:**  
PBS only

# Selected Validation Data



Cytometric bead array sample test of MP51470-1, ASF1A Monoclonal Matched Antibody Pair, PBS Only. Capture antibody: 66884-2-PBS. Detection antibody: 66884-1-PBS.



Cytometric bead array standard curve of MP51470-1, ASF1A Monoclonal Matched Antibody Pair, PBS Only. Capture antibody: 66884-2-PBS. Detection antibody: 66884-1-PBS. Standard: Ag1233. Range: 0.781-100 ng/mL.