

For Research Use Only

LCP2 Monoclonal Matched Antibody Pair, PBS Only



Catalog Number:MP51467-1

Capture Antibody Information

Catalog Number:
66465-2-PBS
Host:
Mouse
Isotype:
IgG1
Purification Method:
Protein G Magarose purification

Clone ID:
1A12C6
Reactivity:
human
GenBank:
BC016618
Immunogen Catalog Number:
Ag3432

Conjugate:
Unconjugated
Full name:
lymphocyte cytosolic protein 2 (SH2 domain containing leukocyte protein of 76kDa)
Gene ID:
3937

Detection Antibody Information

Catalog Number:
66465-3-PBS
Host:
Mouse
Isotype:
IgG1
Purification Method:
Protein G Magarose purification

Clone ID:
2H3A7
Reactivity:
human
GenBank:
BC016618
Immunogen Catalog Number:
Ag3432

Conjugate:
Unconjugated
Full name:
lymphocyte cytosolic protein 2 (SH2 domain containing leukocyte protein of 76kDa)
Gene ID:
3937

Applications

Tested Applications:
Cytometric bead array

Range:
0.781-100 ng/mL (Cytometric Bead Array)

Recommended Dilutions:
It is recommended that this reagent should be titrated in each testing system to obtain optimal results.

Product Information

MP51467-1 targets LCP2 in immunoassays as a matched antibody pair. Validated in Cytometric bead array.

Capture antibody: LCP2 Monoclonal antibody, PBS Only (Capture) 66465-2-PBS (1A12C6). 100 µg. Concentration 1 mg/mL.

Detection antibody: LCP2 Monoclonal antibody, PBS Only (Detector) 66465-3-PBS (2H3A7). 100 µg. Concentration 1 mg/mL.

Unconjugated mouse monoclonal antibody pair in PBS only storage buffer at a concentration of 1 mg/mL, ready for conjugation.

Matched antibody pairs are designed for use in a variety of assays and platforms that require matched antibody pairs.

Antibody use should be optimized for each application and assay.

Storage

Storage:
Store at -80°C.

The product is shipped with ice packs. Upon receipt, store it immediately at -80°C

Storage buffer:
PBS only

For technical support and original validation data for this product please contact:

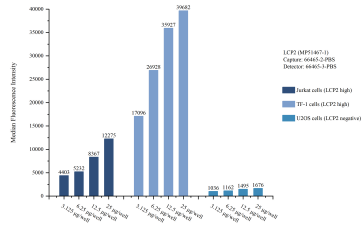
T: 4006900926

E: Proteintech-CN@ptglab.com

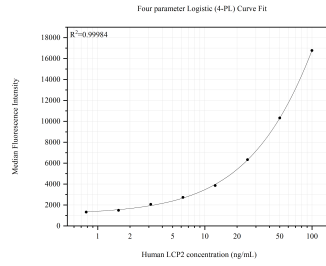
W: ptgcn.com

This product is exclusively available under Proteintech Group brand and is not available to purchase from any other manufacturer.

Selected Validation Data



Cytometric bead array sample test of MP51467-1, LCP2 Monoclonal Matched Antibody Pair, PBS Only. Capture antibody: 66465-2-PBS. Detection antibody: 66465-3-PBS.



Cytometric bead array standard curve of MP51467-1, LCP2 Monoclonal Matched Antibody Pair, PBS Only. Capture antibody: 66465-2-PBS. Detection antibody: 66465-3-PBS. Standard: Ag3432. Range: 0.781-100 ng/mL.