

For Research Use Only

FBXL4 Monoclonal Matched Antibody Pair, PBS Only



Catalog Number:MP51441-1

Capture Antibody Information

Catalog Number: 61001-1-PBS	Clone ID: 2F3F5	Conjugate: Unconjugated
Host: Mouse	Reactivity: human	Full name: F-box and leucine-rich repeat protein 4
Isotype: IgG1	GenBank: BC055010	Gene ID: 26235
Purification Method: Protein G Magarose purification	Immunogen Catalog Number: Ag28326	

Detection Antibody Information

Catalog Number: 61001-2-PBS	Clone ID: 1G2D2	Conjugate: Unconjugated
Host: Mouse	Reactivity: human	Full name: F-box and leucine-rich repeat protein 4
Isotype: IgG3	GenBank: BC055010	Gene ID: 26235
Purification Method: Protein A Magarose purification	Immunogen Catalog Number: Ag28326	

Applications

Tested Applications: Cytometric bead array	Range: 0.781-100 ng/mL (Cytometric Bead Array)	Recommended Dilutions: It is recommended that this reagent should be titrated in each testing system to obtain optimal results.
--	--	---

Product Information

MP51441-1 targets FBXL4 in immunoassays as a matched antibody pair. Validated in Cytometric bead array.

Capture antibody: FBXL4 Monoclonal antibody, PBS Only (Capture) 61001-1-PBS (2F3F5). 100 µg. Concentration 1 mg/mL.

Detection antibody: FBXL4 Monoclonal antibody, PBS Only (Detector) 61001-2-PBS (1G2D2). 100 µg. Concentration 1 mg/mL.

Unconjugated mouse monoclonal antibody pair in PBS only storage buffer at a concentration of 1 mg/mL, ready for conjugation.

Matched antibody pairs are designed for use in a variety of assays and platforms that require matched antibody pairs.

Antibody use should be optimized for each application and assay.

Storage

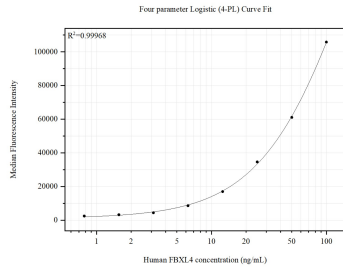
Storage:
Store at -80°C.
The product is shipped with ice packs. Upon receipt, store it immediately at -80°C

Storage buffer:
PBS only

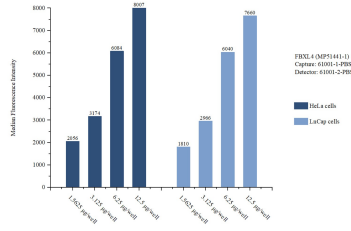
For technical support and original validation data for this product please contact:
T: 4006900926 E: Proteintech-CN@ptglab.com W: ptgcn.com

This product is exclusively available under Proteintech Group brand and is not available to purchase from any other manufacturer.

Selected Validation Data



Cytometric bead array standard curve of MP51441-1, FBXL4 Monoclonal Matched Antibody Pair, PBS Only. Capture antibody: 61001-1-PBS. Detection antibody: 61001-2-PBS. Standard:Ag28326. Range: 0.781-100 ng/mL.



Cytometric bead array sample test of MP51441-1, FBXL4 Monoclonal Matched Antibody Pair, PBS Only. Capture antibody: 61001-1-PBS. Detection antibody: 61001-2-PBS.