

For Research Use Only

# APOL2 Monoclonal Matched Antibody Pair, PBS Only



Catalog Number:MP51435-1

## Capture Antibody Information

<b>Catalog Number:</b> 60998-1-PBS	<b>Clone ID:</b> 1E2D4	<b>Conjugate:</b> Unconjugated
<b>Host:</b> Mouse	<b>Reactivity:</b> human	<b>Full name:</b> apolipoprotein L 2
<b>Isotype:</b> IgG1	<b>GenBank:</b> BC004395	<b>Gene ID:</b> 23780
<b>Purification Method:</b> Protein G Magarose purification	<b>Immunogen Catalog Number:</b> Ag7622	

## Detection Antibody Information

<b>Catalog Number:</b> 60998-2-PBS	<b>Clone ID:</b> 4G4D2	<b>Conjugate:</b> Unconjugated
<b>Host:</b> Mouse	<b>Reactivity:</b> human	<b>Full name:</b> apolipoprotein L 2
<b>Isotype:</b> IgG2b	<b>GenBank:</b> BC004395	<b>Gene ID:</b> 23780
<b>Purification Method:</b> Protein A Magarose purification	<b>Immunogen Catalog Number:</b> Ag7622	

## Applications

<b>Tested Applications:</b> Cytometric bead array	<b>Range:</b> 0.781-100 ng/mL (Cytometric Bead Array)	<b>Recommended Dilutions:</b> It is recommended that this reagent should be titrated in each testing system to obtain optimal results.
--	--	---

## Product Information

MP51435-1 targets APOL2 in immunoassays as a matched antibody pair. Validated in Cytometric bead array.

Capture antibody: APOL2 Monoclonal antibody, PBS Only (Capture) 60998-1-PBS (1E2D4). 100 µg. Concentration 1 mg/mL.

Detection antibody: APOL2 Monoclonal antibody, PBS Only (Detector) 60998-2-PBS (4G4D2). 100 µg. Concentration 1 mg/mL.

Unconjugated mouse monoclonal antibody pair in PBS only storage buffer at a concentration of 1 mg/mL, ready for conjugation.

Matched antibody pairs are designed for use in a variety of assays and platforms that require matched antibody pairs.

Antibody use should be optimized for each application and assay.

## Storage

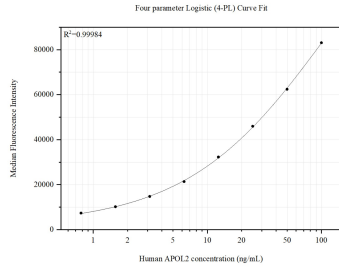
**Storage:**  
Store at -80°C.  
**The product is shipped with ice packs. Upon receipt, store it immediately at -80°C**

**Storage buffer:**  
PBS only

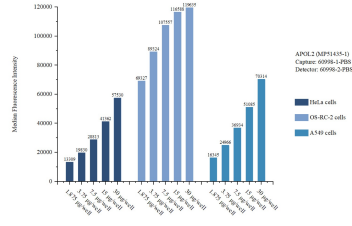
For technical support and original validation data for this product please contact:  
T: 4006900926 E: Proteintech-CN@ptglab.com W: ptgcn.com

**This product is exclusively available under Proteintech Group brand and is not available to purchase from any other manufacturer.**

## Selected Validation Data



Cytometric bead array standard curve of MP51435-1, APOL2 Monoclonal Matched Antibody Pair, PBS Only. Capture antibody: 60998-1-PBS. Detection antibody: 60998-2-PBS. Standard:Ag7622. Range: 0.781-100 ng/mL.



Cytometric bead array sample test of MP51435-1, APOL2 Monoclonal Matched Antibody Pair, PBS Only. Capture antibody: 60998-1-PBS. Detection antibody: 60998-2-PBS.