

CLPS Monoclonal Matched Antibody Pair, PBS Only

Catalog Number: **MP51434-1**

Capture Antibody Information

Catalog Number: 60997-1-PBS	Clone ID: 1G3D2	Conjugate: Unconjugated
Host: Mouse	Reactivity: human	Full name: colipase, pancreatic
Isotype: IgG1	GenBank: BC017897	Gene ID: 1208
Purification Method: Protein G Magarose purification	Immunogen Catalog Number: Ag30106	

Detection Antibody Information

Catalog Number: 60997-2-PBS	Clone ID: 1A6B5	Conjugate: Unconjugated
Host: Mouse	Reactivity: human	Full name: colipase, pancreatic
Isotype: IgG1	GenBank: BC017897	Gene ID: 1208
Purification Method: Protein G Magarose purification	Immunogen Catalog Number: Ag30106	

Applications

Tested Applications: Cytometric bead array	Range: 0.391-100 ng/mL (Cytometric Bead Array)	Recommended Dilutions: It is recommended that this reagent should be titrated in each testing system to obtain optimal results.
---	---	--

Product Information

MP51434-1 targets CLPS in immunoassays as a matched antibody pair. Validated in Cytometric bead array.

Capture antibody: CLPS Monoclonal antibody, PBS Only (Capture) 60997-1-PBS (1G3D2). 100 μ g. Concentration 1 mg/mL.

Detection antibody: CLPS Monoclonal antibody, PBS Only (Detector) 60997-2-PBS (1A6B5). 100 μ g. Concentration 1 mg/mL.

Unconjugated mouse monoclonal antibody pair in PBS only storage buffer at a concentration of 1 mg/mL, ready for conjugation.

Matched antibody pairs are designed for use in a variety of assays and platforms that require matched antibody pairs.

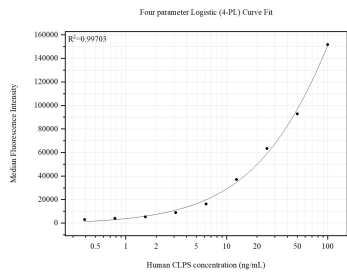
Antibody use should be optimized for each application and assay.

Storage

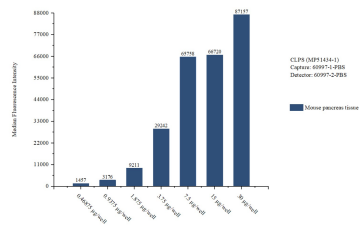
Storage:
Store at -80°C.
The product is shipped with ice packs. Upon receipt, store it immediately at -80°C

Storage buffer:
PBS only

Selected Validation Data



Cytometric bead array standard curve of MP51434-1, CLPS Monoclonal Matched Antibody Pair, PBS Only. Capture antibody: 60997-1-PBS. Detection antibody: 60997-2-PBS. Standard:Ag30106. Range: 0.391-100 ng/mL



Cytometric bead array sample test of MP51434-1, CLPS Monoclonal Matched Antibody Pair, PBS Only. Capture antibody: 60997-1-PBS. Detection antibody: 60997-2-PBS.