

For Research Use Only

# KLF10 Monoclonal Matched Antibody Pair, PBS Only



Catalog Number:MP51417-1

## Capture Antibody Information

<b>Catalog Number:</b> 60983-1-PBS	<b>Clone ID:</b> 2E8A5	<b>Conjugate:</b> Unconjugated
<b>Host:</b> Mouse	<b>Reactivity:</b> human	<b>Full name:</b> Kruppel-like factor 10
<b>Isotype:</b> IgG1	<b>GenBank:</b> BC011538	<b>Gene ID:</b> 7071
<b>Purification Method:</b> Protein G purification	<b>Immunogen Catalog Number:</b> Ag31754	

## Detection Antibody Information

<b>Catalog Number:</b> 60983-2-PBS	<b>Clone ID:</b> 2H1H11	<b>Conjugate:</b> Unconjugated
<b>Host:</b> Mouse	<b>Reactivity:</b> human	<b>Full name:</b> Kruppel-like factor 10
<b>Isotype:</b> IgG1	<b>GenBank:</b> BC011538	<b>Gene ID:</b> 7071
<b>Purification Method:</b> Protein G Magarose purification	<b>Immunogen Catalog Number:</b> Ag31754	

## Applications

<b>Tested Applications:</b> Cytometric bead array	<b>Range:</b> 0.781-100 ng/mL (Cytometric Bead Array)	<b>Recommended Dilutions:</b> It is recommended that this reagent should be titrated in each testing system to obtain optimal results.
--	--	---

## Product Information

MP51417-1 targets KLF10 in immunoassays as a matched antibody pair. Validated in Cytometric bead array.

Capture antibody: KLF10 Monoclonal antibody, PBS Only (Capture) 60983-1-PBS (2E8A5). 100 µg. Concentration 1 mg/mL.

Detection antibody: KLF10 Monoclonal antibody, PBS Only (Detector) 60983-2-PBS (2H1H11). 100 µg. Concentration 1 mg/mL.

Unconjugated mouse monoclonal antibody pair in PBS only storage buffer at a concentration of 1 mg/mL, ready for conjugation.

Matched antibody pairs are designed for use in a variety of assays and platforms that require matched antibody pairs.

Antibody use should be optimized for each application and assay.

## Storage

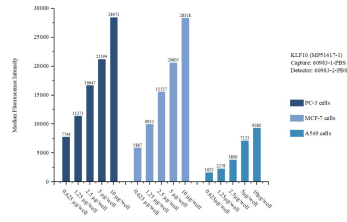
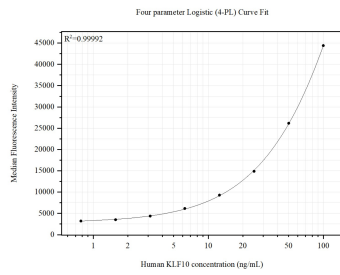
**Storage:**  
Store at -80°C.  
**The product is shipped with ice packs. Upon receipt, store it immediately at -80°C**

**Storage buffer:**  
PBS only

For technical support and original validation data for this product please contact:  
T: 4006900926 E: Proteintech-CN@ptglab.com W: ptgcn.com

This product is exclusively available under Proteintech Group brand and is not available to purchase from any other manufacturer.

## Selected Validation Data



Cytometric bead array standard curve of MP51417-1, KLF10 Monoclonal Matched Antibody Pair, PBS Only. Capture antibody: 60983-1-PBS. Detection antibody: 60983-2-PBS. Standard: Ag31754. Range: 0.781-100 ng/mL.

Sample test of MP51417-1, KLF10 Monoclonal Matched Antibody Pair, PBS Only. Capture antibody: 60983-1-PBS. Detection antibody: 60983-2-PBS.