

For Research Use Only

SLC7A6 Monoclonal Matched Antibody Pair, PBS Only



Catalog Number:MP51413-1

Capture Antibody Information

Catalog Number:
60980-1-PBS

Host:
Mouse

Isotype:
IgG1

Purification Method:
Protein G Magarose purification

Clone ID:
1G10F2

Reactivity:
human

GenBank:
BC028216

Immunogen Catalog Number:
Ag4924

Conjugate:
Unconjugated

Full name:
solute carrier family 7 (cationic amino acid transporter, y+ system), member 6

Gene ID:
9057

Detection Antibody Information

Catalog Number:
60980-2-PBS

Host:
Mouse

Isotype:
IgG1

Purification Method:
Protein G Magarose purification

Clone ID:
3D11F11

Reactivity:
human

GenBank:
BC028216

Immunogen Catalog Number:
Ag4924

Conjugate:
Unconjugated

Full name:
solute carrier family 7 (cationic amino acid transporter, y+ system), member 6

Gene ID:
9057

Applications

Tested Applications:
Cytometric bead array

Range:
0.098-100 ng/mL (Cytometric Bead Array)

Recommended Dilutions:
It is recommended that this reagent should be titrated in each testing system to obtain optimal results.

Product Information

MP51413-1 targets SLC7A6 in immunoassays as a matched antibody pair. Validated in Cytometric bead array.

Capture antibody: SLC7A6 Monoclonal antibody, PBS Only (Capture) 60980-1-PBS (1G10F2). 100 μ g. Concentration 1 mg/mL.

Detection antibody: SLC7A6 Monoclonal antibody, PBS Only (Detector) 60980-2-PBS (3D11F11). 100 μ g. Concentration 1 mg/mL.

Unconjugated mouse monoclonal antibody pair in PBS only storage buffer at a concentration of 1 mg/mL, ready for conjugation.

Matched antibody pairs are designed for use in a variety of assays and platforms that require matched antibody pairs.

Antibody use should be optimized for each application and assay.

Storage

Storage:

Store at -80°C.

The product is shipped with ice packs. Upon receipt, store it immediately at -80°C

Storage buffer:

PBS only

For technical support and original validation data for this product please contact:

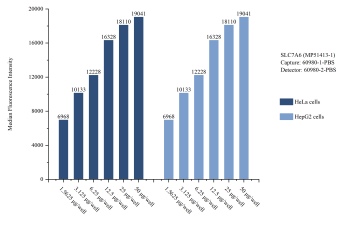
T: 4006900926

E: Proteintech-CN@ptglab.com

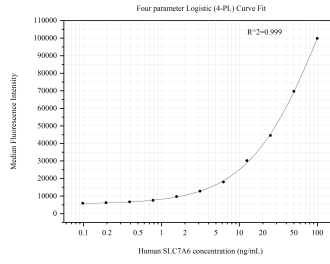
W: ptgcn.com

This product is exclusively available under Proteintech Group brand and is not available to purchase from any other manufacturer.

Selected Validation Data



Sample test of MP51413-1, SLC7A6 Monoclonal Matched Antibody Pair, PBS Only. Capture antibody: 60980-1-PBS. Detection antibody: 60980-2-PBS.



Cytometric bead array standard curve of MP51413-1, SLC7A6 Monoclonal Matched Antibody Pair, PBS Only. Capture antibody: 60980-1-PBS. Detection antibody: 60980-2-PBS. Standard: Ag4924. Range: 0.098-100 ng/mL