

UBE3A Monoclonal Matched Antibody Pair, PBS Only

Catalog Number: **MP51408-1**

Capture Antibody Information

Catalog Number: 60038-1-PBS	Clone ID: 3D6H9	Conjugate: Unconjugated
Host: Mouse	Reactivity: human, mouse	Full name: ubiquitin protein ligase E3A
Isotype: IgG1	GenBank: BC002582	Gene ID: 7337
Purification Method: Protein G purification	Immunogen Catalog Number: Ag0346	

Detection Antibody Information

Catalog Number: 60977-1-PBS	Clone ID: 1F11F3	Conjugate: Unconjugated
Host: Mouse	Reactivity: human	Full name: ubiquitin protein ligase E3A
Isotype: IgG1	GenBank: BC002582	Gene ID: 7337
Purification Method: Protein G Magarose purification	Immunogen Catalog Number: Ag17546	

Applications

Tested Applications: Cytometric bead array	Range: 3.125-400 ng/mL (Cytometric Bead Array)	Recommended Dilutions: It is recommended that this reagent should be titrated in each testing system to obtain optimal results.
--	--	---

Product Information

MP51408-1 targets UBE3A in immunoassays as a matched antibody pair. Validated in Cytometric bead array.

Capture antibody: UBE3A Monoclonal antibody, PBS Only (Capture) 60038-1-PBS (3D6H9). 100 µg. Concentration 1 mg/mL.

Detection antibody: UBE3A Monoclonal antibody, PBS Only (Detector) 60977-1-PBS (1F11F3). 100 µg. Concentration 1 mg/mL.

Unconjugated mouse monoclonal antibody pair in PBS only storage buffer at a concentration of 1 mg/mL, ready for conjugation.

Matched antibody pairs are designed for use in a variety of assays and platforms that require matched antibody pairs.

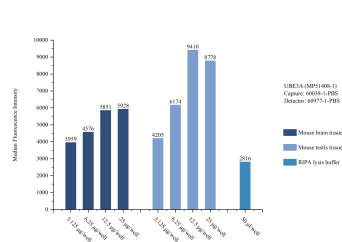
Antibody use should be optimized for each application and assay.

Storage

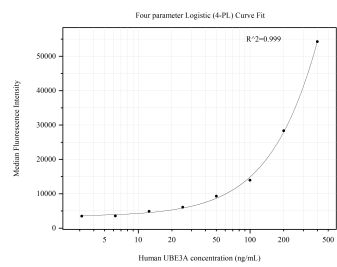
Storage:
Store at -80°C.
The product is shipped with ice packs. Upon receipt, store it immediately at -80°C

Storage buffer:
PBS only

Selected Validation Data



Sample test of MP51408-1, UBE3A Monoclonal Matched Antibody Pair, PBS Only. Capture antibody: 60038-1-PBS. Detection antibody: 60977-1-PBS.



Cytometric bead array standard curve of MP51408-1, UBE3A Monoclonal Matched Antibody Pair, PBS Only. Capture antibody: 60038-1-PBS. Detection antibody: 60977-1-PBS. Standard:Ag17546. Range: 3.125-400 ng/mL.