

# DDHD2 Monoclonal Matched Antibody Pair, PBS Only

Catalog Number:MP51382-1

## Capture Antibody Information

<b>Catalog Number:</b> 60965-1-PBS	<b>Clone ID:</b> 3G3F8	<b>Conjugate:</b> Unconjugated
<b>Host:</b> Mouse	<b>Reactivity:</b> human	<b>Full name:</b> DDHD domain containing 2
<b>Isotype:</b> IgG1	<b>GenBank:</b> BC010504	<b>Gene ID:</b> 23259
<b>Purification Method:</b> Protein G Magarose purification	<b>Immunogen Catalog Number:</b> Ag18391	

## Detection Antibody Information

<b>Catalog Number:</b> 60965-2-PBS	<b>Clone ID:</b> 3E1C9	<b>Conjugate:</b> Unconjugated
<b>Host:</b> Mouse	<b>Reactivity:</b> human	<b>Full name:</b> DDHD domain containing 2
<b>Isotype:</b> IgG1	<b>GenBank:</b> BC010504	<b>Gene ID:</b> 23259
<b>Purification Method:</b> Protein G Magarose purification	<b>Immunogen Catalog Number:</b> Ag18391	

## Applications

<b>Tested Applications:</b> Cytometric bead array	<b>Range:</b> 3.125-400 ng/mL (Cytometric Bead Array)	<b>Recommended Dilutions:</b> It is recommended that this reagent should be titrated in each testing system to obtain optimal results.
--	--	---

## Product Information

MP51382-1 targets DDHD2 in immunoassays as a matched antibody pair. Validated in Cytometric bead array.

Capture antibody: DDHD2 Monoclonal antibody, PBS Only (Capture) 60965-1-PBS (3G3F8). 100 µg. Concentration 1 mg/mL.

Detection antibody: DDHD2 Monoclonal antibody, PBS Only (Detector) 60965-2-PBS (3E1C9). 100 µg. Concentration 1 mg/mL.

Unconjugated mouse monoclonal antibody pair in PBS only storage buffer at a concentration of 1 mg/mL, ready for conjugation.

Matched antibody pairs are designed for use in a variety of assays and platforms that require matched antibody pairs.

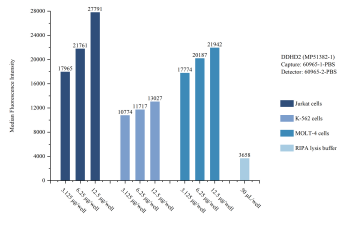
Antibody use should be optimized for each application and assay.

## Storage

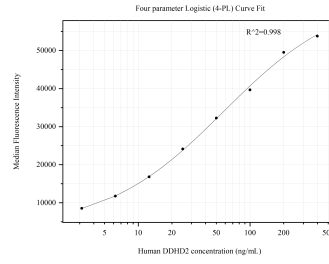
**Storage:**  
Store at -80°C.  
**The product is shipped with ice packs. Upon receipt, store it immediately at -80°C**

**Storage buffer:**  
PBS only

## Selected Validation Data



Sample test of MP51382-1, DDHD2 Monoclonal Matched Antibody Pair, PBS Only. Capture antibody: 60965-1-PBS. Detection antibody: 60965-2-PBS.



Cytometric bead array standard curve of MP51382-1, DDHD2 Monoclonal Matched Antibody Pair, PBS Only. Capture antibody: 60965-1-PBS. Detection antibody: 60965-2-PBS. Standard: Ag18391. Range: 3.125-400 ng/mL