

# SNAP29 Monoclonal Matched Antibody Pair, PBS Only

Catalog Number: MP51379-1

## Capture Antibody Information

Catalog Number:  
60963-1-PBS  
Host:  
Mouse  
Isotype:  
IgG1  
Purification Method:  
Protein G purification

Clone ID:  
1A8D12  
Reactivity:  
human  
GenBank:  
BC009715  
Immunogen Catalog Number:  
Ag24548

Conjugate:  
Unconjugated  
Full name:  
synaptosomal-associated protein,  
29kDa  
Gene ID:  
9342

## Detection Antibody Information

Catalog Number:  
60963-2-PBS  
Host:  
Mouse  
Isotype:  
IgG1  
Purification Method:  
Protein G purification

Clone ID:  
1B5A4  
Reactivity:  
human  
GenBank:  
BC009715  
Immunogen Catalog Number:  
Ag24548

Conjugate:  
Unconjugated  
Full name:  
synaptosomal-associated protein,  
29kDa  
Gene ID:  
9342

## Applications

Tested Applications:  
Cytometric bead array

Range:  
0.195-100 ng/mL (Cytometric Bead Array)

Recommended Dilutions:  
It is recommended that this reagent should be titrated in each testing system to obtain optimal results.

## Product Information

MP51379-1 targets SNAP29 in immunoassays as a matched antibody pair. Validated in Cytometric bead array.

Capture antibody: SNAP29 Monoclonal antibody, PBS Only (Capture) 60963-1-PBS (1A8D12). 100 µg. Concentration 1 mg/mL.

Detection antibody: SNAP29 Monoclonal antibody, PBS Only (Detector) 60963-2-PBS (1B5A4). 100 µg. Concentration 1 mg/mL.

Unconjugated mouse monoclonal antibody pair in PBS only storage buffer at a concentration of 1 mg/mL, ready for conjugation.

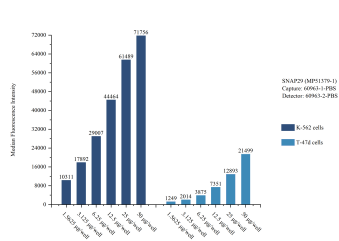
Matched antibody pairs are designed for use in a variety of assays and platforms that require matched antibody pairs.

Antibody use should be optimized for each application and assay.

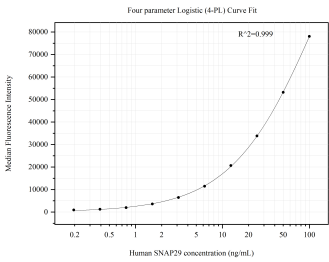
## Storage

Storage:  
Store at -80°C.  
The product is shipped with ice packs. Upon receipt, store it immediately at -80°C  
Storage buffer:  
PBS only

# Selected Validation Data



Sample test of MP51379-1, SNAP29 Monoclonal Matched Antibody Pair, PBS Only. Capture antibody: 60963-1-PBS. Detection antibody: 60963-2-PBS.



Cytometric bead array standard curve of MP51379-1, SNAP29 Monoclonal Matched Antibody Pair, PBS Only. Capture antibody: 60963-1-PBS. Detection antibody: 60963-2-PBS. Standard: Ag24548. Range: 0.195-100 ng/mL.