

# SLC1A2 Monoclonal Matched Antibody Pair, PBS Only

Catalog Number: **MP51374-1**

## Capture Antibody Information

**Catalog Number:**  
67083-2-PBS  
**Host:**  
Mouse  
**Isotype:**  
IgG1  
**Purification Method:**  
Protein G purification

**Clone ID:**  
2H8B6  
**Reactivity:**  
human  
**GenBank:**  
BC132768  
**Immunogen Catalog Number:**  
Ag19816

**Conjugate:**  
Unconjugated  
**Full name:**  
solute carrier family 1 (glial high affinity glutamate transporter), member 2  
**Gene ID:**  
6506

## Detection Antibody Information

**Catalog Number:**  
67083-1-PBS  
**Host:**  
Mouse  
**Isotype:**  
IgG1  
**Purification Method:**  
Protein G purification

**Clone ID:**  
1C8D10  
**Reactivity:**  
human, mouse, rat  
**GenBank:**  
BC132768  
**Immunogen Catalog Number:**  
Ag19816

**Conjugate:**  
Unconjugated  
**Full name:**  
solute carrier family 1 (glial high affinity glutamate transporter), member 2  
**Gene ID:**  
6506

## Applications

**Tested Applications:**  
Cytometric bead array

**Range:**  
0.098-100 ng/mL (Cytometric Bead Array)

**Recommended Dilutions:**  
It is recommended that this reagent should be titrated in each testing system to obtain optimal results.

## Product Information

MP51374-1 targets SLC1A2 in immunoassays as a matched antibody pair. Validated in Cytometric bead array.

Capture antibody: SLC1A2 Monoclonal antibody, PBS Only (Capture) 67083-2-PBS (2H8B6). 100 µg. Concentration 1 mg/mL.

Detection antibody: EAAT2 Monoclonal antibody, PBS Only (Detector) 67083-1-PBS (1C8D10). 100 µg. Concentration 1 mg/mL.

Unconjugated mouse monoclonal antibody pair in PBS only storage buffer at a concentration of 1 mg/mL, ready for conjugation.

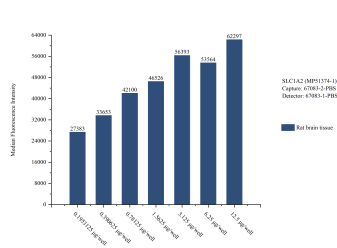
Matched antibody pairs are designed for use in a variety of assays and platforms that require matched antibody pairs.

Antibody use should be optimized for each application and assay.

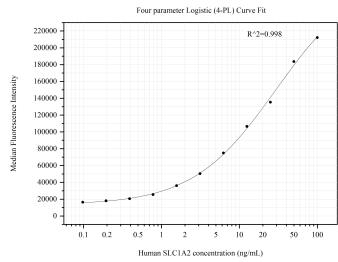
## Storage

**Storage:**  
Store at -80°C.  
**The product is shipped with ice packs. Upon receipt, store it immediately at -80°C**  
**Storage buffer:**  
PBS only

# Selected Validation Data



Sample test of MP51374-1, SLC1A2 Monoclonal Matched Antibody Pair, PBS Only. Capture antibody: 67083-2-PBS. Detection antibody: 67083-1-PBS.



Cytometric bead array standard curve of MP51374-1, SLC1A2 Monoclonal Matched Antibody Pair, PBS Only. Capture antibody: 67083-2-PBS. Detection antibody: 67083-1-PBS. Standard:Ag19816. Range: 0.098-100 ng/mL.