

MAP1LC3A,LC3 Monoclonal Matched Antibody Pair, PBS Only

Catalog Number:MP51371-1

Capture Antibody Information

Catalog Number:
66139-4-PBS
Host:
Mouse
Isotype:
IgG1
Purification Method:
Protein G purification

Clone ID:
1B5H5
Reactivity:
human
GenBank:
BC015810
Immunogen Catalog Number:
Ag17959

Conjugate:
Unconjugated
Full name:
microtubule-associated protein 1 light chain 3 alpha
Gene ID:
84557

Detection Antibody Information

Catalog Number:
66139-5-PBS
Host:
Mouse
Isotype:
IgG1
Purification Method:
Protein G purification

Clone ID:
2A4G9
Reactivity:
human
GenBank:
BC015810
Immunogen Catalog Number:
Ag17959

Conjugate:
Unconjugated
Full name:
microtubule-associated protein 1 light chain 3 alpha
Gene ID:
84557

Applications

Tested Applications:
Cytometric bead array

Range:
0.391-400 ng/mL (Cytometric Bead Array)

Recommended Dilutions:
It is recommended that this reagent should be titrated in each testing system to obtain optimal results.

Product Information

MP51371-1 targets MAP1LC3A,LC3 in immunoassays as a matched antibody pair. Validated in Cytometric bead array.

Capture antibody: MAP1LC3A,LC3 Monoclonal antibody, PBS Only (Capture) 66139-4-PBS (1B5H5). 100 µg. Concentration 1 mg/mL.

Detection antibody: MAP1LC3A,LC3 Monoclonal antibody, PBS Only (Detector) 66139-5-PBS (2A4G9). 100 µg. Concentration 1 mg/mL.

Unconjugated mouse monoclonal antibody pair in PBS only storage buffer at a concentration of 1 mg/mL, ready for conjugation.

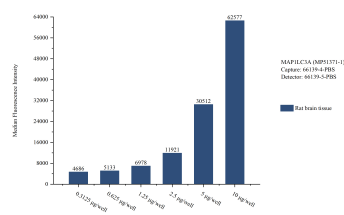
Matched antibody pairs are designed for use in a variety of assays and platforms that require matched antibody pairs.

Antibody use should be optimized for each application and assay.

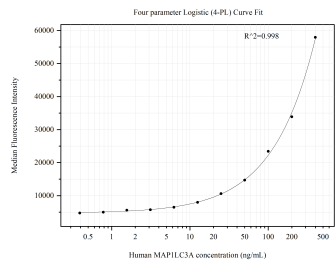
Storage

Storage:
Store at -80°C.
The product is shipped with ice packs. Upon receipt, store it immediately at -80°C
Storage buffer:
PBS only

Selected Validation Data



Sample test of MP51371-1, MAP1LC3A,LC3 Monoclonal Matched Antibody Pair, PBS Only. Capture antibody: 66139-4-PBS. Detection antibody: 66139-5-PBS.



Cytometric bead array standard curve of MP51371-1, MAP1LC3A,LC3 Monoclonal Matched Antibody Pair, PBS Only. Capture antibody: 66139-4-PBS. Detection antibody: 66139-5-PBS. Standard:Ag17959. Range: 0.391-400 ng/mL.