

GLP1R Monoclonal Matched Antibody Pair, PBS Only

Catalog Number: **MP51365-1**

Capture Antibody Information

Catalog Number: 60931-1-PBS	Clone ID: 1A4G5	Conjugate: Unconjugated
Host: Mouse	Reactivity: human, rat	Full name: glucagon-like peptide 1 receptor
Isotype: IgG1	GenBank: BC112126	Gene ID: 2740
Purification Method: Protein G Magarose purification	Immunogen Catalog Number: Ag23529	

Detection Antibody Information

Catalog Number: 60931-2-PBS	Clone ID: 1A7C3	Conjugate: Unconjugated
Host: Mouse	Reactivity: human	Full name: glucagon-like peptide 1 receptor
Isotype: IgG2a	GenBank: BC112126	Gene ID: 2740
Purification Method: Protein A purification	Immunogen Catalog Number: Ag23529	

Applications

Tested Applications: Cytometric bead array	Range: 0.391-200 ng/mL (Cytometric Bead Array)	Recommended Dilutions: It is recommended that this reagent should be titrated in each testing system to obtain optimal results.
---	---	--

Product Information

MP51365-1 targets GLP1R in immunoassays as a matched antibody pair. Validated in Cytometric bead array.

Capture antibody: GLP1R Monoclonal antibody, PBS Only (Capture) 60931-1-PBS (1A4G5). 100 µg. Concentration 1 mg/mL.

Detection antibody: GLP1R Monoclonal antibody, PBS Only (Detector) 60931-2-PBS (1A7C3). 100 µg. Concentration 1 mg/mL.

Unconjugated mouse monoclonal antibody pair in PBS only storage buffer at a concentration of 1 mg/mL, ready for conjugation.

Matched antibody pairs are designed for use in a variety of assays and platforms that require matched antibody pairs.

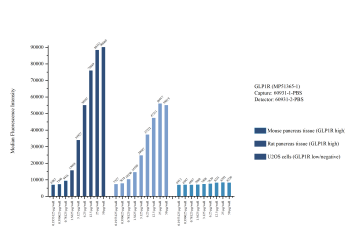
Antibody use should be optimized for each application and assay.

Storage

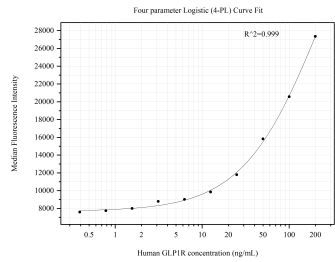
Storage:
Store at -80°C.
The product is shipped with ice packs. Upon receipt, store it immediately at -80°C

Storage buffer:
PBS only

Selected Validation Data



Sample test of MP51365-1, GLP1R Monoclonal Matched Antibody Pair, PBS Only. Capture antibody: 60931-1-PBS. Detection antibody: 60931-2-PBS.



Cytometric bead array standard curve of MP51365-1, GLP1R Monoclonal Matched Antibody Pair, PBS Only. Capture antibody: 60931-1-PBS. Detection antibody: 60931-2-PBS. Standard:Ag23529. Range: 0.391-200 ng/mL