

For Research Use Only

# NOV Monoclonal Matched Antibody Pair, PBS Only



Catalog Number:MP51353-1

## Capture Antibody Information

Catalog Number:  
60935-1-PBS

Host:  
Mouse

Isotype:  
IgG1

Purification Method:  
Protein G purification

Clone ID:  
2H8D4

Reactivity:  
human

GenBank:  
BC015028

Immunogen Catalog Number:  
Ag30138

Conjugate:  
Unconjugated

Full name:  
nephroblastoma overexpressed gene

Gene ID:  
4856

## Detection Antibody Information

Catalog Number:  
60935-2-PBS

Host:  
Mouse

Isotype:  
IgG1

Purification Method:  
Protein G Magarose purification

Clone ID:  
2H10F4

Reactivity:  
human

GenBank:  
BC015028

Immunogen Catalog Number:  
Ag30138

Conjugate:  
Unconjugated

Full name:  
nephroblastoma overexpressed gene

Gene ID:  
4856

## Applications

Tested Applications:  
Cytometric bead array

Range:  
0.098-100 ng/mL (Cytometric Bead Array)

Recommended Dilutions:  
It is recommended that this reagent should be titrated in each testing system to obtain optimal results.

## Product Information

MP51353-1 targets NOV in immunoassays as a matched antibody pair. Validated in Cytometric bead array.

Capture antibody: NOV Monoclonal antibody, PBS Only (Capture) 60935-1-PBS (2H8D4). 100  $\mu$ g. Concentration 1 mg/mL.

Detection antibody: NOV Monoclonal antibody, PBS Only (Detector) 60935-2-PBS (2H10F4). 100  $\mu$ g. Concentration 1 mg/mL.

Unconjugated mouse monoclonal antibody pair in PBS only storage buffer at a concentration of 1 mg/mL, ready for conjugation.

Matched antibody pairs are designed for use in a variety of assays and platforms that require matched antibody pairs.

Antibody use should be optimized for each application and assay.

## Storage

Storage:

Store at -80°C.

**The product is shipped with ice packs. Upon receipt, store it immediately at -80°C**

Storage buffer:

PBS only

For technical support and original validation data for this product please contact:

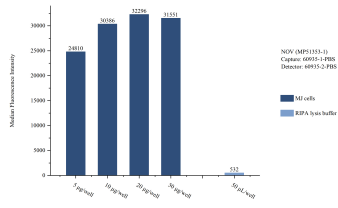
T: 4006900926

E: [Proteintech-CN@ptglab.com](mailto:Proteintech-CN@ptglab.com)

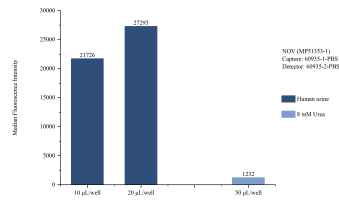
W: [ptgcn.com](http://ptgcn.com)

**This product is exclusively available under Proteintech Group brand and is not available to purchase from any other manufacturer.**

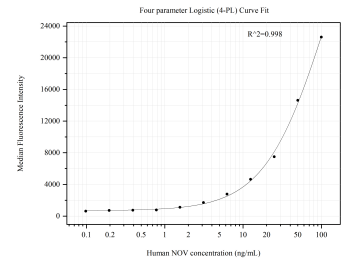
## Selected Validation Data



Sample test of MP51353-1, NOV Monoclonal Matched Antibody Pair, PBS Only. Capture antibody: 60935-1-PBS. Detection antibody: 60935-2-PBS.



Cytometric bead array of Human urine using MP51353-1, NOV Monoclonal Matched Antibody Pair, PBS Only. Capture antibody: 60935-1-PBS. Detection antibody: 60935-2-PBS.



Cytometric bead array standard curve of MP51353-1, NOV Monoclonal Matched Antibody Pair, PBS Only. Capture antibody: 60935-1-PBS. Detection antibody: 60935-2-PBS. Standard: Ag30138. Range: 0.098-100 ng/mL.