

# CRCP Monoclonal Matched Antibody Pair, PBS Only

Catalog Number: **MP51347-2**

## Capture Antibody Information

Catalog Number: 60928-1-PBS	Clone ID: 1H4F9	Conjugate: Unconjugated
Host: Mouse	Reactivity: human	Full name: CGRP receptor component
Isotype: IgG1	GenBank: BC040107	Gene ID: 27297
Purification Method: Protein G purification	Immunogen Catalog Number: Ag5689	

## Detection Antibody Information

Catalog Number: 60928-3-PBS	Clone ID: 1G4C9	Conjugate: Unconjugated
Host: Mouse	Reactivity: human	Full name: CGRP receptor component
Isotype: IgG1	GenBank: BC040107	Gene ID: 27297
Purification Method: Protein G Magarose purification	Immunogen Catalog Number: Ag5689	

## Applications

Tested Applications: Cytometric bead array	Range: 0.391-400 ng/mL (Cytometric Bead Array)	Recommended Dilutions: It is recommended that this reagent should be titrated in each testing system to obtain optimal results.
---	---	--

## Product Information

MP51347-2 targets CRCP in immunoassays as a matched antibody pair. Validated in Cytometric bead array.

Capture antibody: CRCP Monoclonal antibody, PBS Only (Capture) 60928-1-PBS (1H4F9). 100 µg. Concentration 1 mg/mL.

Detection antibody: CRCP Monoclonal antibody, PBS Only (Detector) 60928-3-PBS (1G4C9). 100 µg. Concentration 1 mg/mL.

Unconjugated mouse monoclonal antibody pair in PBS only storage buffer at a concentration of 1 mg/mL, ready for conjugation.

Matched antibody pairs are designed for use in a variety of assays and platforms that require matched antibody pairs.

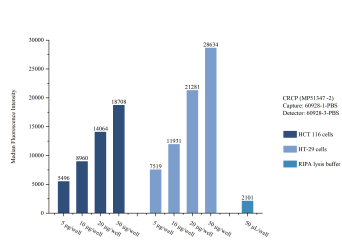
Antibody use should be optimized for each application and assay.

## Storage

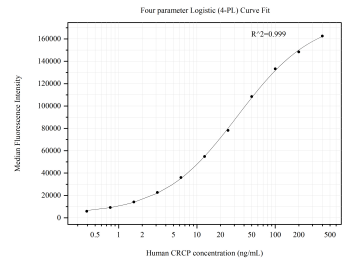
Storage:  
Store at -80°C.  
**The product is shipped with ice packs. Upon receipt, store it immediately at -80°C**

Storage buffer:  
PBS only

# Selected Validation Data



Sample test of MP51347-2, CRCP Monoclonal Matched Antibody Pair, PBS Only. Capture antibody: 60928-1-PBS. Detection antibody: 60928-3-PBS.



Cytometric bead array standard curve of MP51347-2, CRCP Monoclonal Matched Antibody Pair, PBS Only. Capture antibody: 60928-1-PBS. Detection antibody: 60928-3-PBS. Standard: Ag5689. Range: 0.391-400 ng/mL.