

CRCP Monoclonal Matched Antibody Pair, PBS Only

Catalog Number: **MP51347-1**

Capture Antibody Information

Catalog Number: 60928-1-PBS	Clone ID: 1H4F9	Conjugate: Unconjugated
Host: Mouse	Reactivity: human	Full name: CGRP receptor component
Isotype: IgG1	GenBank: BC040107	Gene ID: 27297
Purification Method: Protein G purification	Immunogen Catalog Number: Ag5689	

Detection Antibody Information

Catalog Number: 60928-2-PBS	Clone ID: 2G11G1	Conjugate: Unconjugated
Host: Mouse	Reactivity: human	Full name: CGRP receptor component
Isotype: IgG1	GenBank: BC040107	Gene ID: 27297
Purification Method: Protein G Magarose purification	Immunogen Catalog Number: Ag6177	

Applications

Tested Applications: Cytometric bead array	Range: 0.391-400 ng/mL (Cytometric Bead Array)	Recommended Dilutions: It is recommended that this reagent should be titrated in each testing system to obtain optimal results.
--	--	---

Product Information

MP51347-1 targets CRCP in immunoassays as a matched antibody pair. Validated in Cytometric bead array.

Capture antibody: CRCP Monoclonal antibody, PBS Only (Capture) 60928-1-PBS (1H4F9). 100 µg. Concentration 1 mg/mL.

Detection antibody: CRCP Monoclonal antibody, PBS Only (Detector) 60928-2-PBS (2G11G1). 100 µg. Concentration 1 mg/mL.

Unconjugated mouse monoclonal antibody pair in PBS only storage buffer at a concentration of 1 mg/mL, ready for conjugation.

Matched antibody pairs are designed for use in a variety of assays and platforms that require matched antibody pairs.

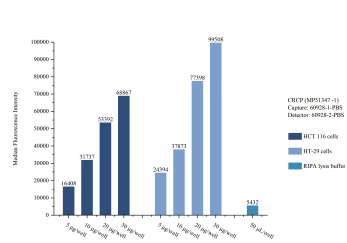
Antibody use should be optimized for each application and assay.

Storage

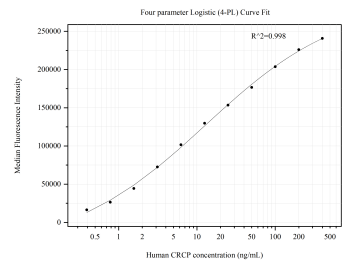
Storage:
Store at -80°C.
The product is shipped with ice packs. Upon receipt, store it immediately at -80°C

Storage buffer:
PBS only

Selected Validation Data



Sample test of MP51347-1, CRCP Monoclonal Matched Antibody Pair, PBS Only. Capture antibody: 60928-1-PBS. Detection antibody: 60928-2-PBS.



Cytometric bead array standard curve of MP51347-1, CRCP Monoclonal Matched Antibody Pair, PBS Only. Capture antibody: 60928-1-PBS. Detection antibody: 60928-2-PBS. Standard:Ag5689. Range: 0.391-400 ng/mL