

GCLC Monoclonal Matched Antibody Pair, PBS Only

Catalog Number: **MP51345-1**

Capture Antibody Information

Catalog Number:
60926-1-PBS
Host:
Mouse
Isotype:
IgG1
Purification Method:
Protein G Magarose purification

Clone ID:
1B9D4
Reactivity:
human
GenBank:
BC022487
Immunogen Catalog Number:
Ag18847

Conjugate:
Unconjugated
Full name:
glutamate-cysteine ligase, catalytic subunit
Gene ID:
2729

Detection Antibody Information

Catalog Number:
60926-2-PBS
Host:
Mouse
Isotype:
IgG1
Purification Method:
Protein G Magarose purification

Clone ID:
3C7C11
Reactivity:
human
GenBank:
BC022487
Immunogen Catalog Number:
Ag18847

Conjugate:
Unconjugated
Full name:
glutamate-cysteine ligase, catalytic subunit
Gene ID:
2729

Applications

Tested Applications:
Cytometric bead array

Range:
1.563-400 ng/mL (Cytometric Bead Array)

Recommended Dilutions:
It is recommended that this reagent should be titrated in each testing system to obtain optimal results.

Product Information

MP51345-1 targets GCLC in immunoassays as a matched antibody pair. Validated in Cytometric bead array.

Capture antibody: GCLC Monoclonal antibody, PBS Only (Capture) 60926-1-PBS (1B9D4). 100 μ g. Concentration 1 mg/mL.

Detection antibody: GCLC Monoclonal antibody, PBS Only (Detector) 60926-2-PBS (3C7C11). 100 μ g. Concentration 1 mg/mL.

Unconjugated mouse monoclonal antibody pair in PBS only storage buffer at a concentration of 1 mg/mL, ready for conjugation.

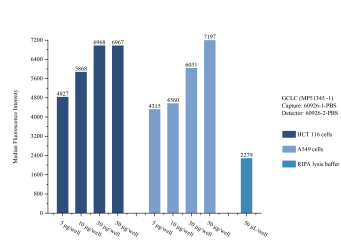
Matched antibody pairs are designed for use in a variety of assays and platforms that require matched antibody pairs.

Antibody use should be optimized for each application and assay.

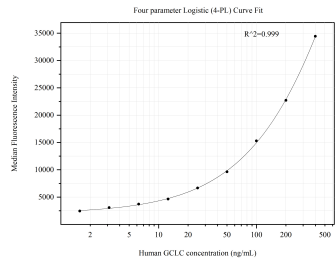
Storage

Storage:
Store at -80°C.
The product is shipped with ice packs. Upon receipt, store it immediately at -80°C
Storage buffer:
PBS only

Selected Validation Data



Sample test of MP51345-1, GCLC Monoclonal Matched Antibody Pair, PBS Only. Capture antibody: 60926-1-PBS. Detection antibody: 60926-2-PBS.



Cytometric bead array standard curve of MP51345-1, GCLC Monoclonal Matched Antibody Pair, PBS Only. Capture antibody: 60926-1-PBS. Detection antibody: 60926-2-PBS. Standard: Ag18847. Range: 1.563-400 ng/mL.