

RBM3 Monoclonal Matched Antibody Pair, PBS Only

Catalog Number: **MP51344-1**

Capture Antibody Information

Catalog Number: 60925-1-PBS	Clone ID: 2D2G1	Conjugate: Unconjugated
Host: Mouse	Reactivity: human	Full name: RNA binding motif (RNP1, RRM) protein 3
Isotype: IgG1	GenBank: BC006825	Gene ID: 5935
Purification Method: Protein G Magarose purification	Immunogen Catalog Number: Ag28329	

Detection Antibody Information

Catalog Number: 60925-2-PBS	Clone ID: 1G6G3	Conjugate: Unconjugated
Host: Mouse	Reactivity: human	Full name: RNA binding motif (RNP1, RRM) protein 3
Isotype: IgG1	GenBank: BC006825	Gene ID: 5935
Purification Method: Protein G Magarose purification	Immunogen Catalog Number: Ag28329	

Applications

Tested Applications: Cytometric bead array	Range: 0.391-100 ng/mL (Cytometric Bead Array)	Recommended Dilutions: It is recommended that this reagent should be titrated in each testing system to obtain optimal results.
--	--	---

Product Information

MP51344-1 targets RBM3 in immunoassays as a matched antibody pair. Validated in Cytometric bead array.

Capture antibody: RBM3 Monoclonal antibody, PBS Only (Capture) 60925-1-PBS (2D2G1). 100 µg. Concentration 1 mg/mL.

Detection antibody: RBM3 Monoclonal antibody, PBS Only (Detector) 60925-2-PBS (1G6G3). 100 µg. Concentration 1 mg/mL.

Unconjugated mouse monoclonal antibody pair in PBS only storage buffer at a concentration of 1 mg/mL, ready for conjugation.

Matched antibody pairs are designed for use in a variety of assays and platforms that require matched antibody pairs.

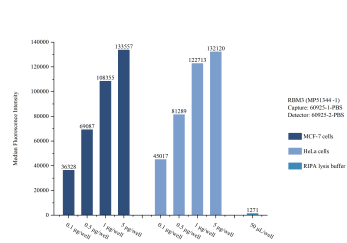
Antibody use should be optimized for each application and assay.

Storage

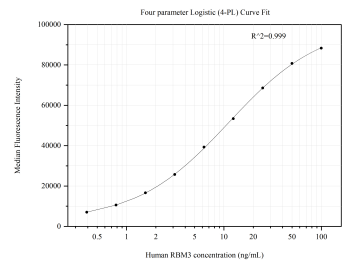
Storage:
Store at -80°C.
The product is shipped with ice packs. Upon receipt, store it immediately at -80°C

Storage buffer:
PBS only

Selected Validation Data



Sample test of MP51344-1, RBM3 Monoclonal Matched Antibody Pair, PBS Only. Capture antibody: 60925-1-PBS. Detection antibody: 60925-2-PBS.



Cytometric bead array standard curve of MP51344-1, RBM3 Monoclonal Matched Antibody Pair, PBS Only. Capture antibody: 60925-1-PBS. Detection antibody: 60925-2-PBS. Standard:Ag28329. Range: 0.391-100 ng/mL.