

# POLR2I Monoclonal Matched Antibody Pair, PBS Only

Catalog Number: **MP51342-1**

## Capture Antibody Information

**Catalog Number:**  
60923-1-PBS  
**Host:**  
Mouse  
**Isotype:**  
IgG1  
**Purification Method:**  
Protein G Magarose purification

**Clone ID:**  
1C11E6  
**Reactivity:**  
human  
**GenBank:**  
BC017112  
**Immunogen Catalog Number:**  
Ag11219

**Conjugate:**  
Unconjugated  
**Full name:**  
polymerase (RNA) II (DNA directed) polypeptide I, 14.5kDa  
**Gene ID:**  
5438

## Detection Antibody Information

**Catalog Number:**  
60923-2-PBS  
**Host:**  
Mouse  
**Isotype:**  
IgG1  
**Purification Method:**  
Protein G Magarose purification

**Clone ID:**  
1B8H5  
**Reactivity:**  
human  
**GenBank:**  
BC017112  
**Immunogen Catalog Number:**  
Ag11219

**Conjugate:**  
Unconjugated  
**Full name:**  
polymerase (RNA) II (DNA directed) polypeptide I, 14.5kDa  
**Gene ID:**  
5438

## Applications

**Tested Applications:**  
Cytometric bead array

**Range:**  
0.391-400 ng/mL (Cytometric Bead Array)

**Recommended Dilutions:**  
It is recommended that this reagent should be titrated in each testing system to obtain optimal results.

## Product Information

MP51342-1 targets POLR2I in immunoassays as a matched antibody pair. Validated in Cytometric bead array.

Capture antibody: POLR2I Monoclonal antibody, PBS Only (Capture) 60923-1-PBS (1C11E6). 100 µg. Concentration 1 mg/mL.

Detection antibody: POLR2I Monoclonal antibody, PBS Only (Detector) 60923-2-PBS (1B8H5). 100 µg. Concentration 1 mg/mL.

Unconjugated mouse monoclonal antibody pair in PBS only storage buffer at a concentration of 1 mg/mL, ready for conjugation.

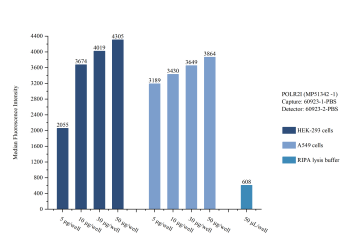
Matched antibody pairs are designed for use in a variety of assays and platforms that require matched antibody pairs.

Antibody use should be optimized for each application and assay.

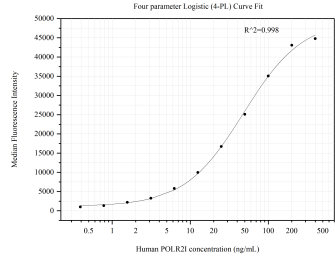
## Storage

**Storage:**  
Store at -80°C.  
**The product is shipped with ice packs. Upon receipt, store it immediately at -80°C**  
**Storage buffer:**  
PBS only

Selected Validation Data



Sample test of MP51342-1, POLR2I Monoclonal Matched Antibody Pair, PBS Only. Capture antibody: 60923-1-PBS. Detection antibody: 60923-2-PBS.



Cytometric bead array standard curve of MP51342-1, POLR2I Monoclonal Matched Antibody Pair, PBS Only. Capture antibody: 60923-1-PBS. Detection antibody: 60923-2-PBS. Standard: Ag11219. Range: 0.391-400 ng/mL.