

# RBP3 Monoclonal Matched Antibody Pair, PBS Only

Catalog Number:MP51339-1

## Capture Antibody Information

**Catalog Number:**  
60921-1-PBS  
**Host:**  
Mouse  
**Isotype:**  
IgG1  
**Purification Method:**  
Protein G purification

**Clone ID:**  
1C8D10  
**Reactivity:**  
human  
**GenBank:**  
BC039844  
**Immunogen Catalog Number:**  
Ag6182

**Conjugate:**  
Unconjugated  
**Full name:**  
retinol binding protein 3, interstitial  
**Gene ID:**  
5949

## Detection Antibody Information

**Catalog Number:**  
60921-2-PBS  
**Host:**  
Mouse  
**Isotype:**  
IgG1  
**Purification Method:**  
Protein G Magarose purification

**Clone ID:**  
1A10C10  
**Reactivity:**  
human  
**GenBank:**  
BC039844  
**Immunogen Catalog Number:**  
Ag6182

**Conjugate:**  
Unconjugated  
**Full name:**  
retinol binding protein 3, interstitial  
**Gene ID:**  
5949

## Applications

**Tested Applications:**  
Cytometric bead array

**Range:**  
0.391-400 ng/mL (Cytometric Bead Array)

**Recommended Dilutions:**  
It is recommended that this reagent should be titrated in each testing system to obtain optimal results.

## Product Information

MP51339-1 targets RBP3 in immunoassays as a matched antibody pair. Validated in Cytometric bead array.

Capture antibody: RBP3 Monoclonal antibody, PBS Only (Capture) 60921-1-PBS (1C8D10). 100 µg. Concentration 1 mg/mL.

Detection antibody: RBP3 Monoclonal antibody, PBS Only (Detector) 60921-2-PBS (1A10C10). 100 µg. Concentration 1 mg/mL.

Unconjugated mouse monoclonal antibody pair in PBS only storage buffer at a concentration of 1 mg/mL, ready for conjugation.

Matched antibody pairs are designed for use in a variety of assays and platforms that require matched antibody pairs.

Antibody use should be optimized for each application and assay.

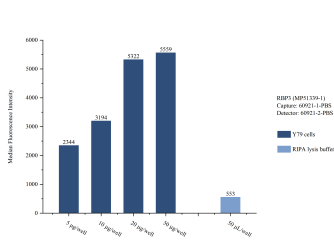
## Storage

**Storage:**  
Store at -80°C.

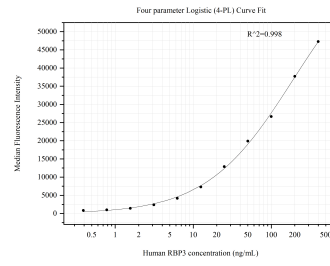
The product is shipped with ice packs. Upon receipt, store it immediately at -80°C

**Storage buffer:**  
PBS only

## Selected Validation Data



Sample test of MP51339-1, RBP3 Monoclonal Matched Antibody Pair, PBS Only. Capture antibody: 60921-1-PBS. Detection antibody: 60921-2-PBS.



Cytometric bead array standard curve of MP51339-1, RBP3 Monoclonal Matched Antibody Pair, PBS Only. Capture antibody: 60921-1-PBS. Detection antibody: 60921-2-PBS. Standard: Ag6182. Range: 0.391-400 ng/mL.