

MAP1LC3B Monoclonal Matched Antibody Pair, PBS Only

Catalog Number: **MP51338-1**

Capture Antibody Information

Catalog Number:
60920-1-PBS
Host:
Mouse
Isotype:
IgG1
Purification Method:
Protein G purification

Clone ID:
1C2E2
Reactivity:
human
GenBank:
BC067797
Immunogen Catalog Number:
Ag6470

Conjugate:
Unconjugated
Full name:
microtubule-associated protein 1 light chain 3 beta
Gene ID:
81631

Detection Antibody Information

Catalog Number:
60920-2-PBS
Host:
Mouse
Isotype:
IgG1
Purification Method:
Protein G purification

Clone ID:
1G5B2
Reactivity:
human
GenBank:
BC067797
Immunogen Catalog Number:
Ag6470

Conjugate:
Unconjugated
Full name:
microtubule-associated protein 1 light chain 3 beta
Gene ID:
81631

Applications

Tested Applications:
Cytometric bead array

Range:
0.488-500 ng/mL (Cytometric Bead Array)

Recommended Dilutions:
It is recommended that this reagent should be titrated in each testing system to obtain optimal results.

Product Information

MP51338-1 targets MAP1LC3B in immunoassays as a matched antibody pair. Validated in Cytometric bead array.

Capture antibody: LC3 Monoclonal antibody, PBS Only (Capture) 60920-1-PBS (1C2E2). 100 µg. Concentration 1 mg/mL.

Detection antibody: LC3 Monoclonal antibody, PBS Only (Detector) 60920-2-PBS (1G5B2). 100 µg. Concentration 1 mg/mL.

Unconjugated mouse monoclonal antibody pair in PBS only storage buffer at a concentration of 1 mg/mL, ready for conjugation.

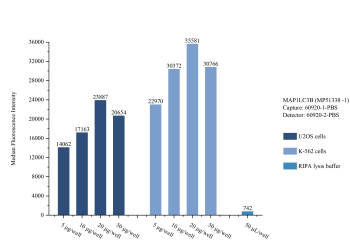
Matched antibody pairs are designed for use in a variety of assays and platforms that require matched antibody pairs.

Antibody use should be optimized for each application and assay.

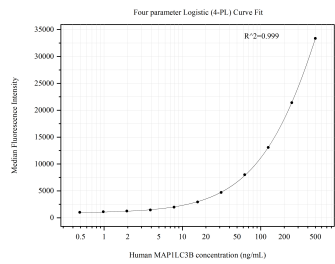
Storage

Storage:
Store at -80°C.
The product is shipped with ice packs. Upon receipt, store it immediately at -80°C
Storage buffer:
PBS only

Selected Validation Data



Sample test of MP51338-1, MAP1LC3B Monoclonal Matched Antibody Pair, PBS Only. Capture antibody: 60920-1-PBS. Detection antibody: 60920-2-PBS.



Cytometric bead array standard curve of MP51338-1, LC3 Monoclonal Matched Antibody Pair, PBS Only. Capture antibody: 60920-1-PBS. Detection antibody: 60920-2-PBS. Standard: Ag6470. Range: 0.488-500 ng/mL