

MAPK11 Monoclonal Matched Antibody Pair, PBS Only

Catalog Number: **MP51335-2**

Capture Antibody Information

Catalog Number: 60913-1-PBS	Clone ID: 1E5D8	Conjugate: Unconjugated
Host: Mouse	Reactivity: human	Full name: mitogen-activated protein kinase 11
Isotype: IgG1	GenBank: BC027933	Gene ID: 5600
Purification Method: Protein G purification	Immunogen Catalog Number: Ag11986	

Detection Antibody Information

Catalog Number: 60913-3-PBS	Clone ID: 2D2A6	Conjugate: Unconjugated
Host: Mouse	Reactivity: human	Full name: mitogen-activated protein kinase 11
Isotype: IgG2b	GenBank: BC027933	Gene ID: 5600
Purification Method: Protein A purification	Immunogen Catalog Number: Ag11986	

Applications

Tested Applications: Cytometric bead array	Range: 1.953-500 ng/mL (Cytometric Bead Array)	Recommended Dilutions: It is recommended that this reagent should be titrated in each testing system to obtain optimal results.
--	--	---

Product Information

MP51335-2 targets MAPK11 in immunoassays as a matched antibody pair. Validated in Cytometric bead array.

Capture antibody: MAPK11 Monoclonal antibody, PBS Only (Capture) 60913-1-PBS (1E5D8). 100 µg. Concentration 1 mg/mL.

Detection antibody: MAPK11 Monoclonal antibody, PBS Only (Detector) 60913-3-PBS (2D2A6). 100 µg. Concentration 1 mg/mL.

Unconjugated mouse monoclonal antibody pair in PBS only storage buffer at a concentration of 1 mg/mL, ready for conjugation.

Matched antibody pairs are designed for use in a variety of assays and platforms that require matched antibody pairs.

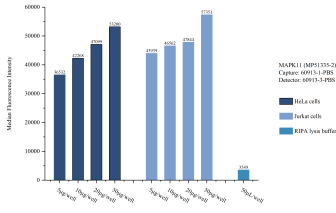
Antibody use should be optimized for each application and assay.

Storage

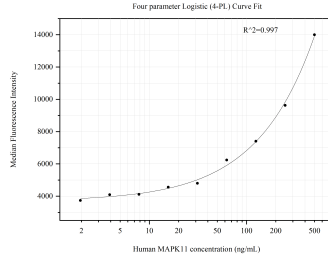
Storage:
Store at -80°C.
The product is shipped with ice packs. Upon receipt, store it immediately at -80°C

Storage buffer:
PBS only

Selected Validation Data



Sample test of MP51335-2, MAPK11 Monoclonal Matched Antibody Pair, PBS Only. Capture antibody: 60913-1-PBS. Detection antibody: 60913-3-PBS.



Cytometric bead array standard curve of MP51335-2, MAPK11 Monoclonal Matched Antibody Pair, PBS Only. Capture antibody: 60913-1-PBS. Detection antibody: 60913-3-PBS. Standard: Ag11986. Range: 1.953-500 ng/mL.