

EPHB2 Monoclonal Matched Antibody Pair, PBS Only

Catalog Number: **MP51327-1**

Capture Antibody Information

Catalog Number: 60908-1-PBS	Clone ID: 1G2G1	Conjugate: Unconjugated
Host: Mouse	Reactivity: human	Full name: EPH receptor B2
Isotype: IgG1	GenBank: BC018763	Gene ID: 2048
Purification Method: Protein G Magarose purification	Immunogen Catalog Number: Ag28796	

Detection Antibody Information

Catalog Number: 60908-2-PBS	Clone ID: 1D2B1	Conjugate: Unconjugated
Host: Mouse	Reactivity: human	Full name: EPH receptor B2
Isotype: IgG1	GenBank: BC018763	Gene ID: 2048
Purification Method: Protein G purification	Immunogen Catalog Number: Ag28796	

Applications

Tested Applications: Cytometric bead array	Range: 7.813-500 ng/mL (Cytometric Bead Array)	Recommended Dilutions: It is recommended that this reagent should be titrated in each testing system to obtain optimal results.
---	---	--

Product Information

MP51327-1 targets EPHB2 in immunoassays as a matched antibody pair. Validated in Cytometric bead array.

Capture antibody: EPHB2 Monoclonal antibody, PBS Only (Capture) 60908-1-PBS (1G2G1). 100 µg. Concentration 1 mg/mL.

Detection antibody: EPHB2 Monoclonal antibody, PBS Only (Detector) 60908-2-PBS (1D2B1). 100 µg. Concentration 1 mg/mL.

Unconjugated mouse monoclonal antibody pair in PBS only storage buffer at a concentration of 1 mg/mL, ready for conjugation.

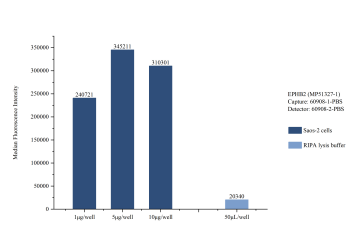
Matched antibody pairs are designed for use in a variety of assays and platforms that require matched antibody pairs.

Antibody use should be optimized for each application and assay.

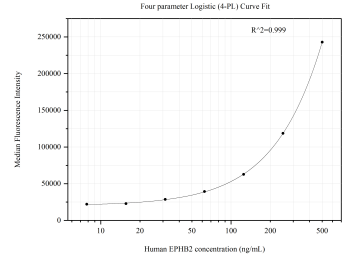
Storage

Storage:
Store at -80°C.
The product is shipped with ice packs. Upon receipt, store it immediately at -80°C
Storage buffer:
PBS only

Selected Validation Data



Sample test of MP51327-1, EPHB2 Monoclonal Matched Antibody Pair, PBS Only. Capture antibody: 60908-1-PBS. Detection antibody: 60908-2-PBS.



Cytometric bead array standard curve of MP51327-1, EPHB2 Monoclonal Matched Antibody Pair, PBS Only. Capture antibody: 60908-1-PBS. Detection antibody: 60908-2-PBS. Standard:Ag28796. Range: 7.813-500 ng/mL.